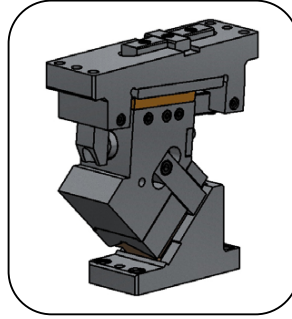




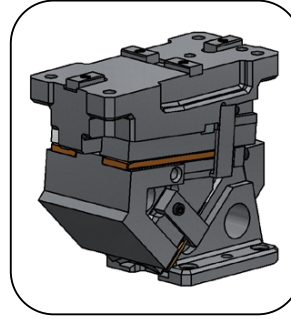
ANRP

Aerial cam for pierce and flange

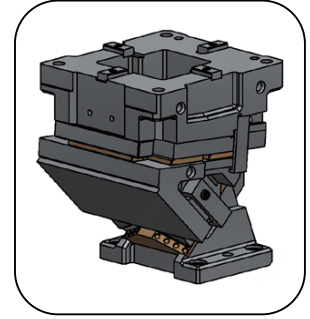
General information



ANRP 0070
ANRP 0080



ANRP 0165
ANRP 0200

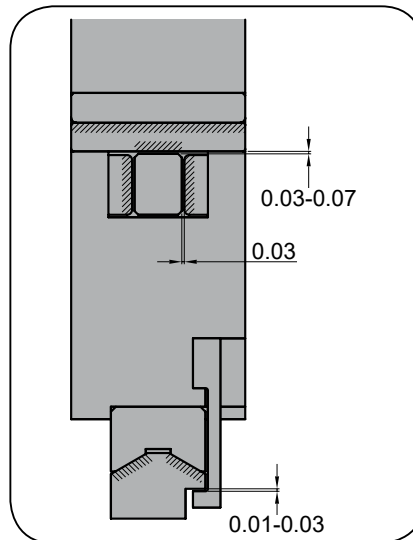


ANRP 0300
ANRP 0400

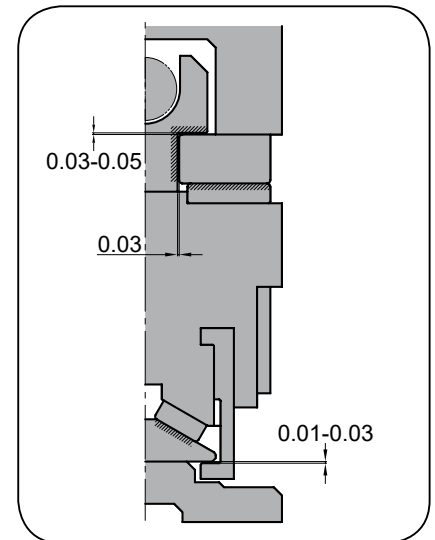
- Aerial cam.
- Angles from 0° to 60° with increments of 5°.
- "V" shaped sliding for auto-centered.
- Optional gas spring.
- According to NAAMS.

Adjustment clearances

ANRP 0070 / 0080



ANRP 0165 / 0200



ANRP

Aerial cam for pierce and flange



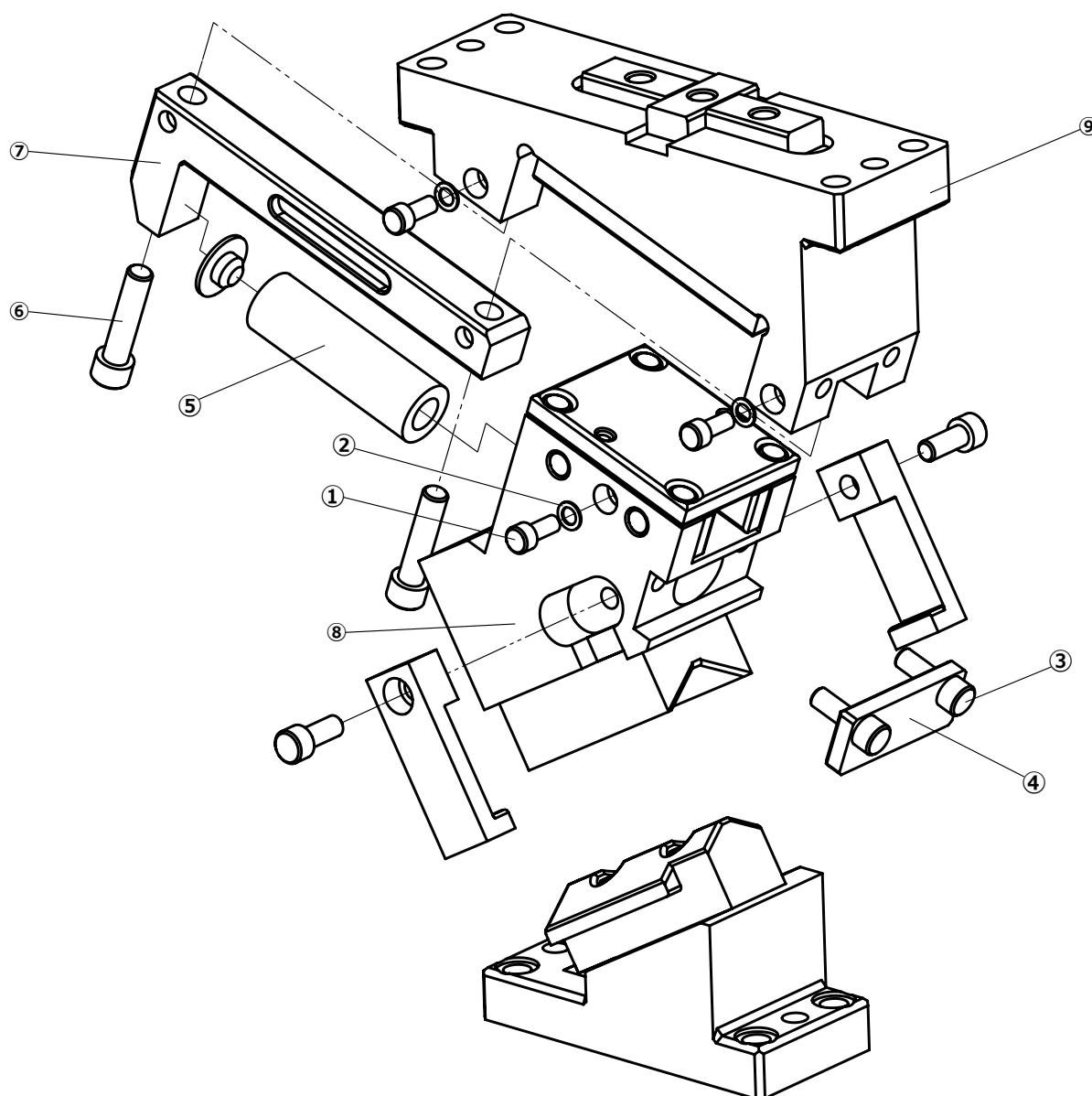
Assembling and disassembling

Disassembling process

- Unscrew ① pieces and remove the washer ②.
- Remove screw ③, stopper plate ④ and extract gas spring ⑤.
- Unscrew ⑥ pieces and remove the guide bar ⑦ from cam holder ⑨.
- Drag guide bar through cam holder.

Assembling process

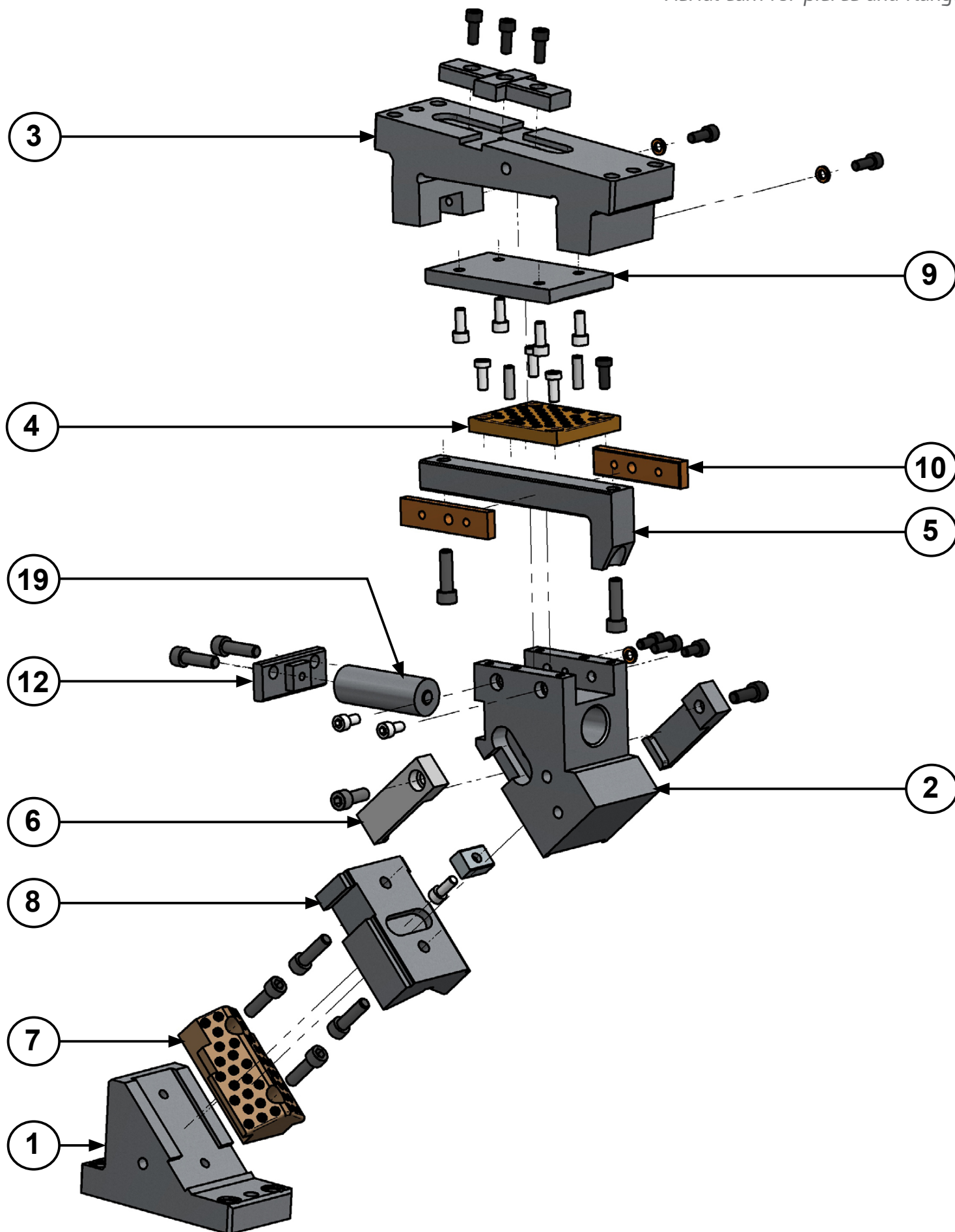
- Make sure that there are no metal shaving or impurities.
- The clearance between the cam holder and slider is controlled.
- Match the serial numbers marked in each part before assembly.
- Make sure that all the screws have been used.





ANRP 0070

Aerial cam for pierce and flange





ANRP 0070

Aerial cam for pierce and flange

Stroke (mm)	Working force kN - (tons)	Spring Force N - (kgf)		Weight (Kg)	Model	W (mm)	α (mm)
		Initial F ₀	Final F ₁				
19.3	98.1 (10.0)	88.2 (9.0)	676.2 (69.0)	16.1	ANRP	0070	00
		---	2058.4 (209.9)				



Order: Model (W) (α)
ANRP 0070 00

Standard order example according to catalog sheet.
 Add options applying options table contents.

OPTIONS

	<p>G GAS SPRING</p> <p> G Gas spring included in the cam</p>

Order Options: Model (W) (α)-Option



ANRP 0070 00-G



SPARE PARTS:

- ④ Slider Plate A
- ⑦ Slide Guide A
- ⑩ Slider Plate B
- ⑲ Coil Spring
- ⑲ Gas spring (**G**)

COMPONENTS

No.		Qty.	Material
①	Cam Driver	1	GG25
②	Cam Slider	1	GGG50
③	Cam Holder	1	GGG50
④	Slider Plate A	1	Bronze + G
⑤	Guide Bar	1	CK45
⑥	Positive Return	1	CK45
⑦	Slide Guide A	1	Bronze + G
⑧	Slide Guide B	1	CK45
⑨	Cam Slider Plate	1	CK45
⑩	Slider Plate B	2	Bronze + G
⑪	Spring Guide Pin	(1)	CK45
⑫	Stopper Plate	1	CK22

No.		Qty.	Material
⑬	Locking plate	1	CK45
⑭	Stopper	2	Urethane
⑮	Dowel Pin	1	Ø8x25
⑯	Elastic Ring	1	L=12.5
⑰	Key A	1	CK45
⑱	Key B	1	CK45
⑲	Coil Spring	1	TJL25-115

⑲	Gas Spring	1	AFC 150 038
---	------------	---	-------------



ANRP 0070

Aerial cam for pierce and flange

Stroke (mm)	Working force kN - (tons)	Spring Force N - (kgf)		Weight (Kg)	Model	W (mm)	α (mm)
		Initial F ₀	Final F ₁				
21.3	98.1 (10.0)	88.2 (9.0)	676.2 (69.0)	15.4	ANRP	0070	05
		---	2058.4 (209.9)				



Order: Model (W) (α)
ANRP 0070 05

Standard order example according to catalog sheet.
 Add options applying options table contents.

OPTIONS

	<p>G GAS SPRING</p> <p> G Gas spring included in the cam</p>

Order Options: Model (W) (α)-Option



ANRP 0070 05-G



SPARE PARTS:

- ④ Slider Plate A
- ⑦ Slide Guide A
- ⑩ Slider Plate B
- ⑲ Coil Spring
- ⑲ Gas spring (G)

COMPONENTS

No.		Qty.	Material
①	Cam Driver	1	GG25
②	Cam Slider	1	GGG50
③	Cam Holder	1	GGG50
④	Slider Plate A	1	Bronze + G
⑤	Guide Bar	1	CK45
⑥	Positive Return	1	CK45
⑦	Slide Guide A	1	Bronze + G
⑧	Slide Guide B	1	CK45
⑨	Cam Slider Plate	1	CK45
⑩	Slider Plate B	2	Bronze + G
⑪	Spring Guide Pin	(1)	CK45
⑫	Stopper Plate	1	CK22

No.		Qty.	Material
⑬	Locking plate	1	CK45
⑭	Stopper	2	Urethane
⑮	Dowel Pin	1	Ø8x25
⑯	Elastic Ring	1	L=12.5
⑰	Key A	1	CK45
⑱	Key B	1	CK45
⑲	Coil Spring	1	TJL25-115

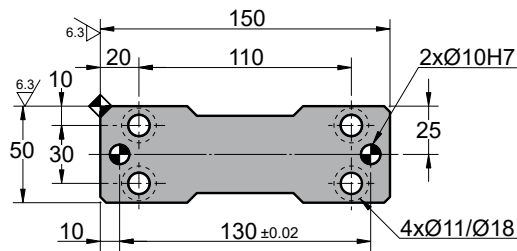
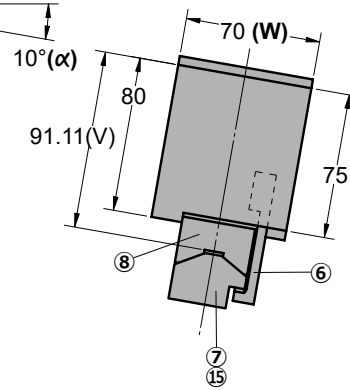
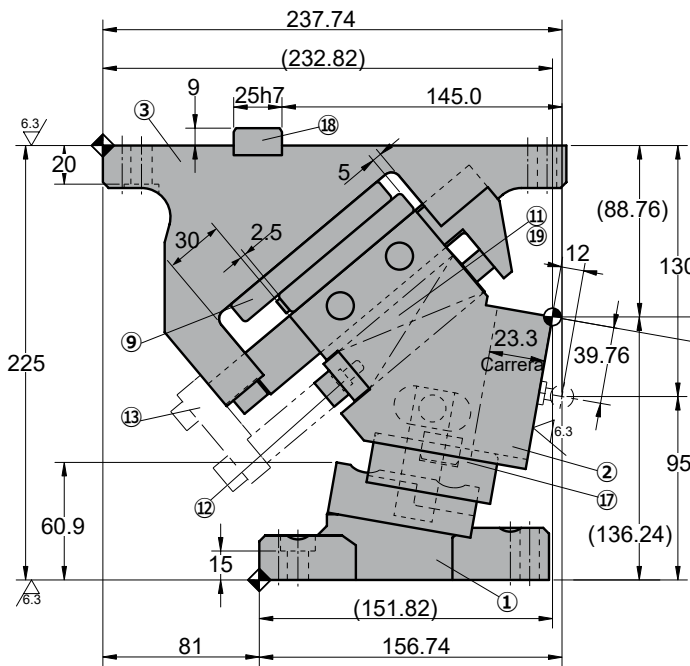
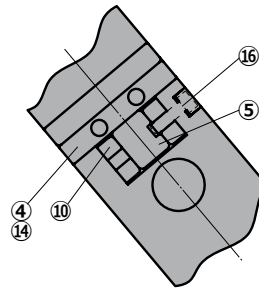
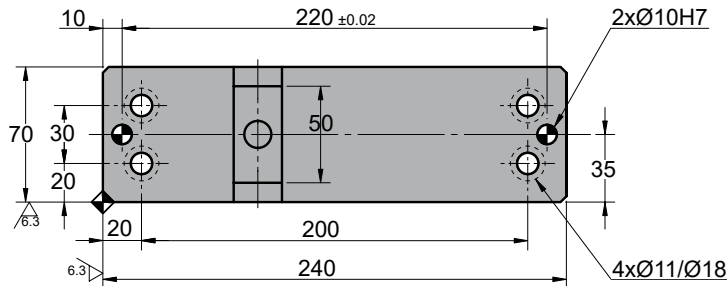
⑲	Gas Spring	1	AFC 150 038
---	------------	---	-------------

ANRP 0070

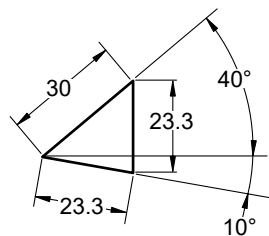
Aerial cam for pierce and flange



ANRP 0070 10



◦Cam diagram:



◦Disassembling space:



ANRP 0070

Aerial cam for pierce and flange

Stroke (mm)	Working force kN - (tons)	Spring Force N - (kgf)		Weight (Kg)	Model	W (mm)	α (mm)
		Initial F ₀	Final F ₁				
23.3	98.1 (10.0)	88.2 (9.0)	676.2 (69.0)	14.8	ANRP	0070	10
		---	2058.4 (209.9)				



Order: Model (W) (α)
ANRP 0070 10

Standard order example according to catalog sheet. Add options applying options table contents.

OPTIONS

	<p>G GAS SPRING</p> <p> G Gas spring included in the cam</p>

Order Options: Model (W) (α)-Option



ANRP 0070 10-G



SPARE PARTS:

- ④ Slider Plate A
- ⑦ Slide Guide A
- ⑩ Slider Plate B
- ⑲ Coil Spring
- ⑲ Gas spring (**G**)

COMPONENTS

No.		Qty.	Material
①	Cam Driver	1	GG25
②	Cam Slider	1	GGG50
③	Cam Holder	1	GGG50
④	Slider Plate A	1	Bronze + G
⑤	Guide Bar	1	CK45
⑥	Positive Return	1	CK45
⑦	Slide Guide A	1	Bronze + G
⑧	Slide Guide B	1	CK45
⑨	Cam Slider Plate	1	CK45
⑩	Slider Plate B	2	Bronze + G
⑪	Spring Guide Pin	(1)	CK45
⑫	Stopper Plate	1	CK22

No.		Qty.	Material
⑬	Locking plate	1	CK45
⑭	Stopper	2	Urethane
⑮	Dowel Pin	1	Ø8x25
⑯	Elastic Ring	1	L=12.5
⑰	Key A	1	CK45
⑱	Key B	1	CK45
⑲	Coil Spring	1	TJL25-115

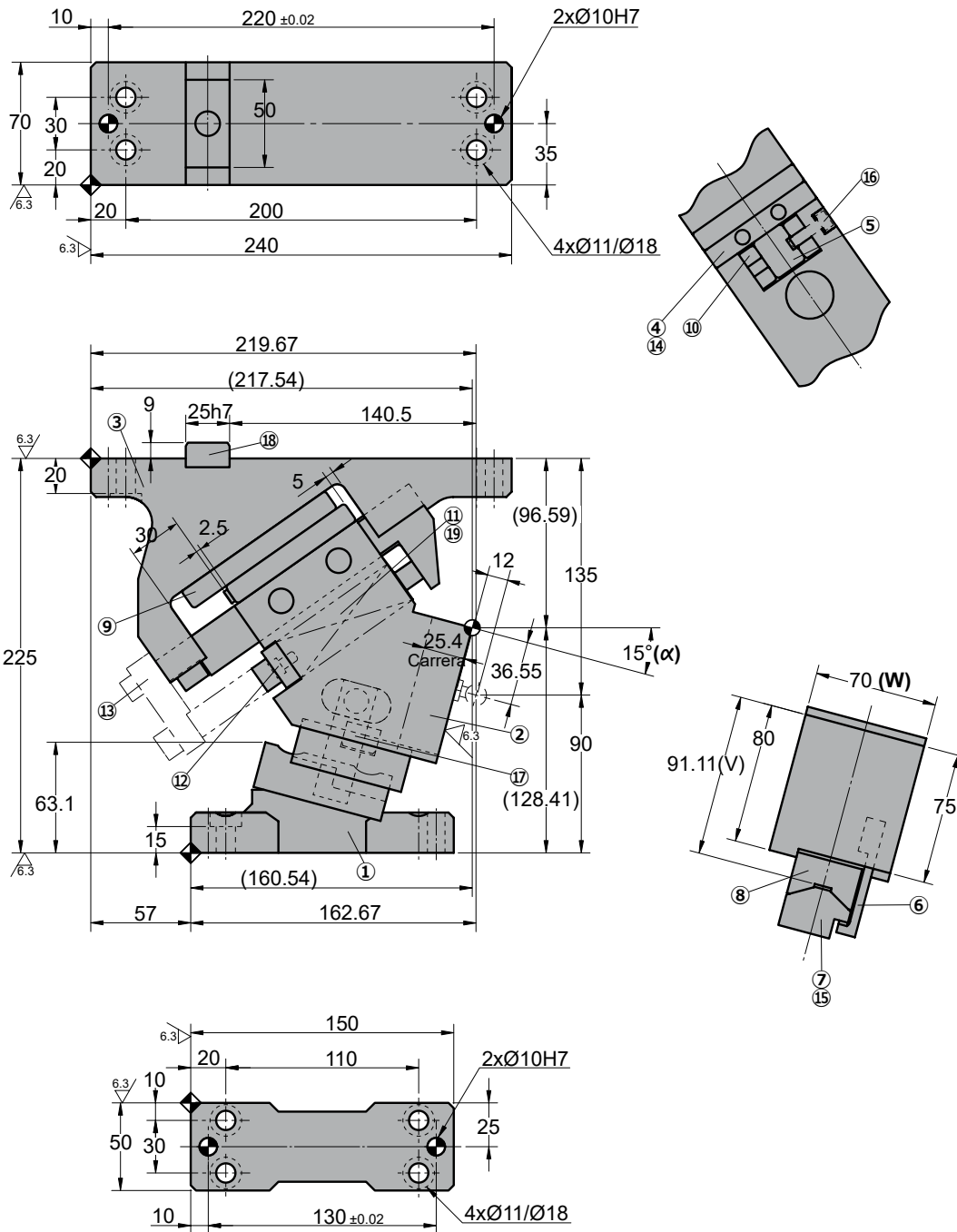
⑲	Gas Spring	1	AFC 150 038
---	------------	---	-------------

ANRP 0070

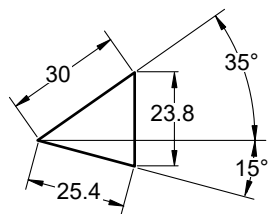
Aerial cam for pierce and flange



ANRP 0070 15



◦Cam diagram:



◦Disassembling space:



ANRP 0070

Aerial cam for pierce and flange

Stroke (mm)	Working force kN - (tons)	Spring Force N - (kgf)		Weight (Kg)	Model	W (mm)	α (mm)
		Initial F ₀	Final F ₁				
25.4	98.1 (10.0)	88.2 (9.0)	676.2 (69.0)	14.1	ANRP	0070	15
		---	2058.4 (209.9)				



Order: Model (W) (α)
ANRP 0070 15

Standard order example according to catalog sheet. Add options applying options table contents.

OPTIONS

	<p>G GAS SPRING</p> <p> G Gas spring included in the cam</p>

Order Options: Model (W) (α)-Option



ANRP 0070 15-G



SPARE PARTS:

- ④ Slider Plate A
- ⑦ Slide Guide A
- ⑩ Slider Plate B
- ⑲ Coil Spring
- ⑲ Gas spring (**G**)

COMPONENTS

No.		Qty.	Material
①	Cam Driver	1	GG25
②	Cam Slider	1	GGG50
③	Cam Holder	1	GGG50
④	Slider Plate A	1	Bronze + G
⑤	Guide Bar	1	CK45
⑥	Positive Return	1	CK45
⑦	Slide Guide A	1	Bronze + G
⑧	Slide Guide B	1	CK45
⑨	Cam Slider Plate	1	CK45
⑩	Slider Plate B	2	Bronze + G
⑪	Spring Guide Pin	(1)	CK45
⑫	Stopper Plate	1	CK22

No.		Qty.	Material
⑬	Locking plate	1	CK45
⑭	Stopper	2	Urethane
⑮	Dowel Pin	1	Ø8x25
⑯	Elastic Ring	1	L=12.5
⑰	Key A	1	CK45
⑱	Key B	1	CK45
⑲	Coil Spring	1	TJL25-115

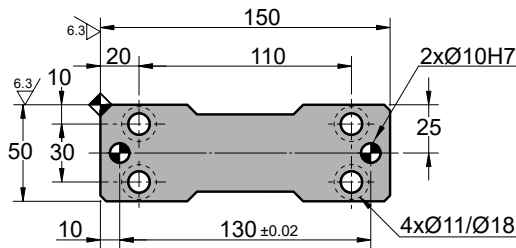
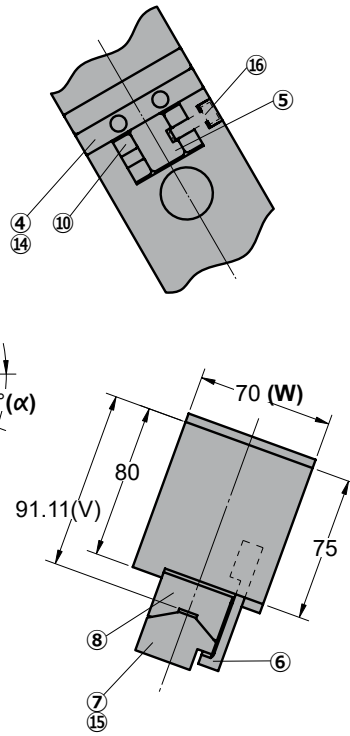
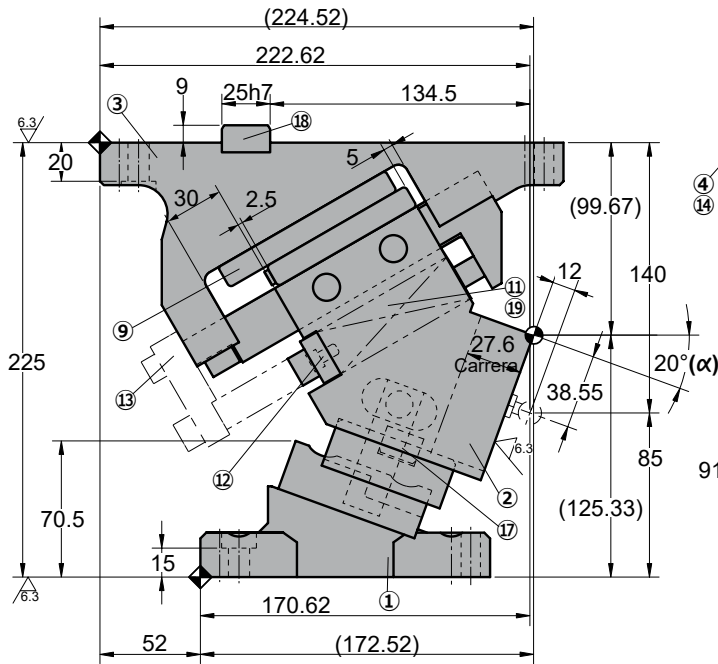
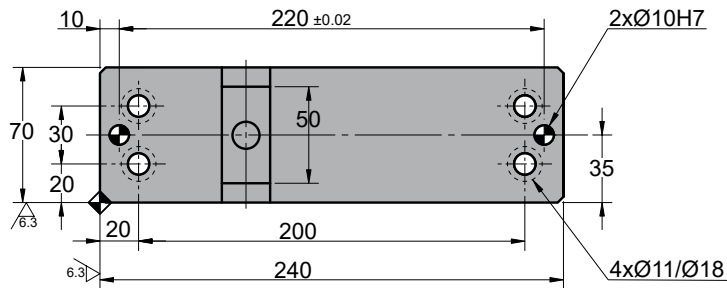
⑲	Gas Spring	1	AFC 150 038
---	------------	---	-------------

ANRP 0070

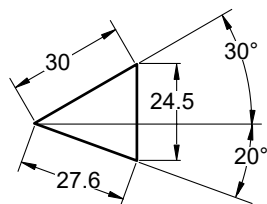
Aerial cam for pierce and flange



ANRP 0070 20



◦Cam diagram:



◦Disassembling space:



ANRP 0070

Aerial cam for pierce and flange

Stroke (mm)	Working force kN - (tons)	Spring Force N - (kgf)		Weight (Kg)	Model	W (mm)	α (mm)
		Initial F ₀	Final F ₁				
27.6	98.1 (10.0)	88.2 (9.0)	676.2 (69.0)	14.1	ANRP	0070	20
		---	2058.4 (209.9)				



Order: Model (W) (α)
ANRP 0070 20

Standard order example according to catalog sheet. Add options applying options table contents.

OPTIONS

	<p>G GAS SPRING</p> <p> G Gas spring included in the cam</p>

Order Options: Model (W) (α)-Option



ANRP 0070 20-G



SPARE PARTS:

- ④ Slider Plate A
- ⑦ Slide Guide A
- ⑩ Slider Plate B
- ⑲ Coil Spring
- ⑲ Gas spring (**G**)

COMPONENTS

No.		Qty.	Material
①	Cam Driver	1	GG25
②	Cam Slider	1	GGG50
③	Cam Holder	1	GGG50
④	Slider Plate A	1	Bronze + G
⑤	Guide Bar	1	CK45
⑥	Positive Return	1	CK45
⑦	Slide Guide A	1	Bronze + G
⑧	Slide Guide B	1	CK45
⑨	Cam Slider Plate	1	CK45
⑩	Slider Plate B	2	Bronze + G
⑪	Spring Guide Pin	(1)	CK45
⑫	Stopper Plate	1	CK22

No.		Qty.	Material
⑬	Locking plate	1	CK45
⑭	Stopper	2	Urethane
⑮	Dowel Pin	1	Ø8x25
⑯	Elastic Ring	1	L=12.5
⑰	Key A	1	CK45
⑱	Key B	1	CK45
⑲	Coil Spring	1	TJL25-115

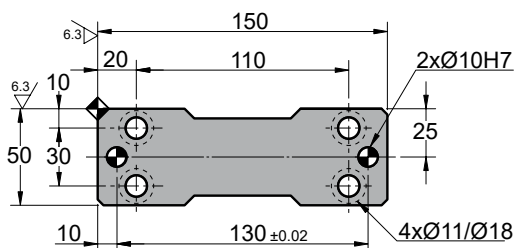
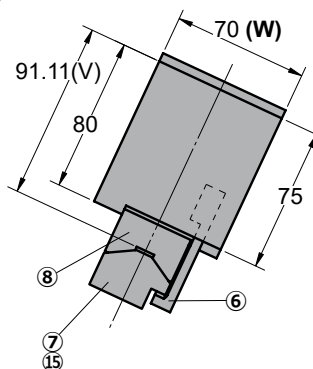
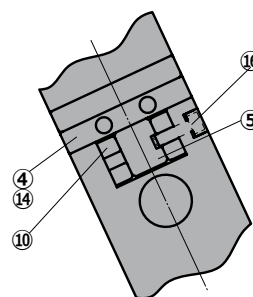
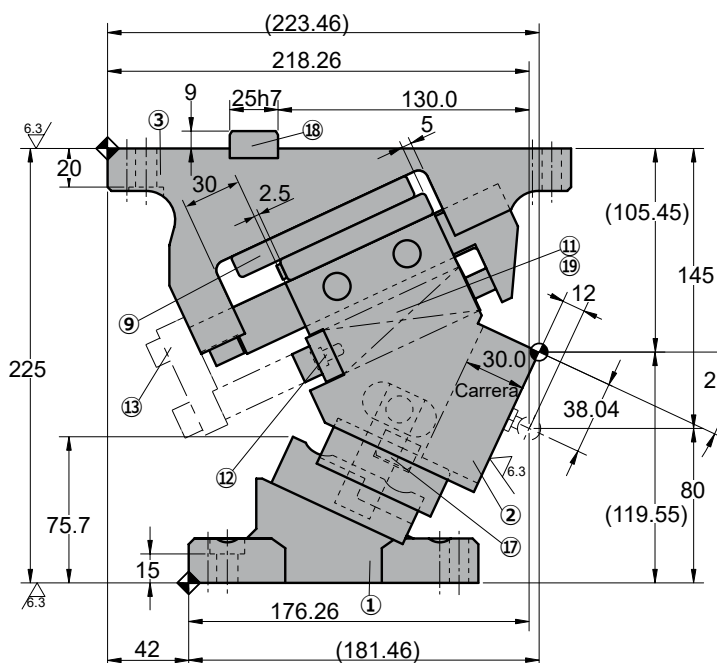
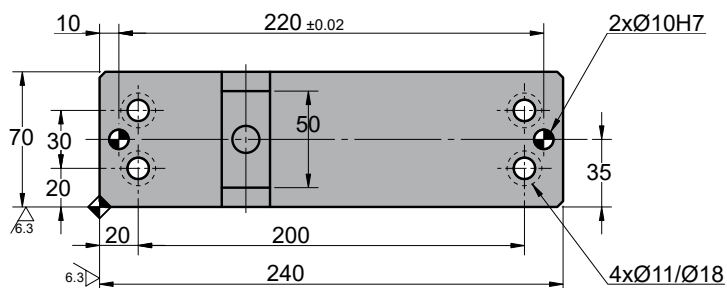
⑲	Gas Spring	1	AFC 150 038
---	------------	---	-------------

ANRP 0070

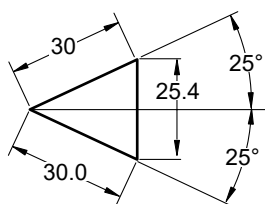
Aerial cam for pierce and flange



ANRP 0070 25



◦Cam diagram:



◦Disassembling space:



ANRP 0070

Aerial cam for pierce and flange

Stroke (mm)	Working force kN - (tons)	Spring Force N - (kgf)		Weight (Kg)	Model	W (mm)	α (mm)
		Initial F ₀	Final F ₁				
30.0	98.1 (10.0)	88.2 (9.0)	676.2 (69.0)	14.0	ANRP	0070	25
		---	2058.4 (209.9)				



Order: Model (W) (α)
ANRP 0070 25

Standard order example according to catalog sheet.
 Add options applying options table contents.

OPTIONS

	<p>G GAS SPRING</p> <p> G Gas spring included in the cam</p>

Order Options: Model (W) (α)-Option



ANRP 0070 25-G



SPARE PARTS:

- ④ Slider Plate A
- ⑦ Slide Guide A
- ⑩ Slider Plate B
- ⑲ Coil Spring
- ⑲ Gas spring (**G**)

COMPONENTS

No.		Qty.	Material
①	Cam Driver	1	GG25
②	Cam Slider	1	GGG50
③	Cam Holder	1	GGG50
④	Slider Plate A	1	Bronze + G
⑤	Guide Bar	1	CK45
⑥	Positive Return	1	CK45
⑦	Slide Guide A	1	Bronze + G
⑧	Slide Guide B	1	CK45
⑨	Cam Slider Plate	1	CK45
⑩	Slider Plate B	2	Bronze + G
⑪	Spring Guide Pin	(1)	CK45
⑫	Stopper Plate	1	CK22

No.		Qty.	Material
⑬	Locking plate	1	CK45
⑭	Stopper	2	Urethane
⑮	Dowel Pin	1	Ø8x25
⑯	Elastic Ring	1	L=12.5
⑰	Key A	1	CK45
⑱	Key B	1	CK45
⑲	Coil Spring	1	TJL25-115

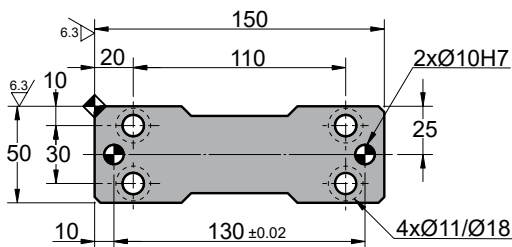
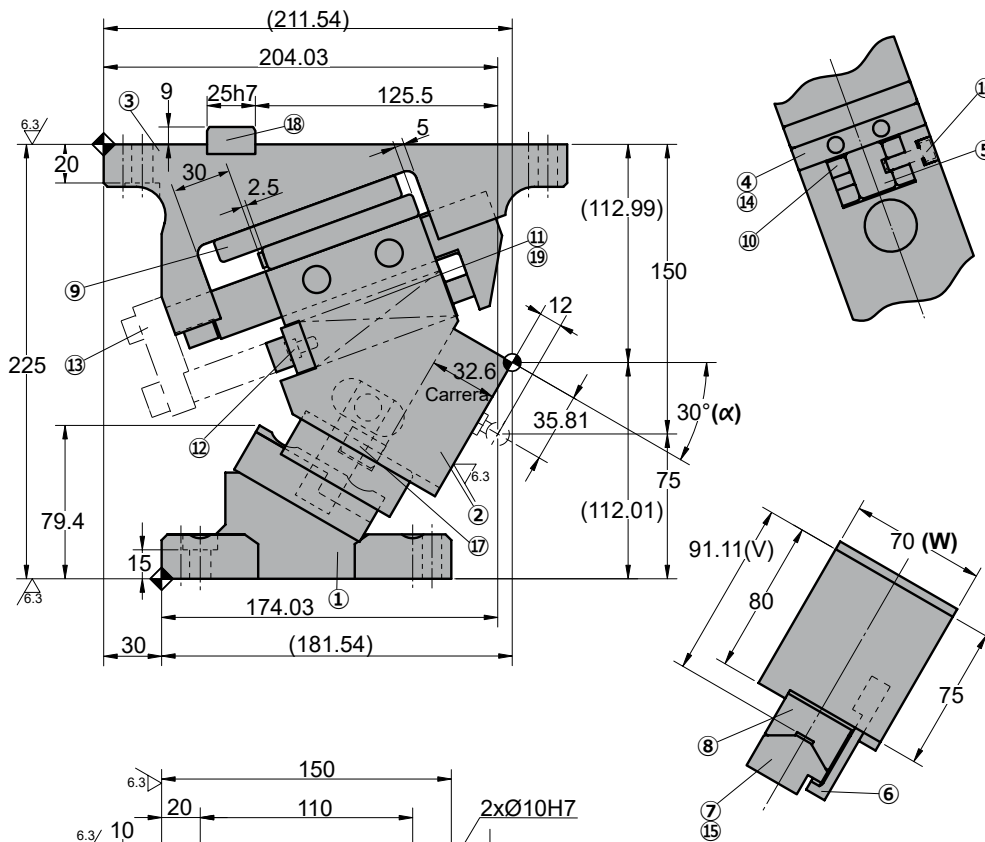
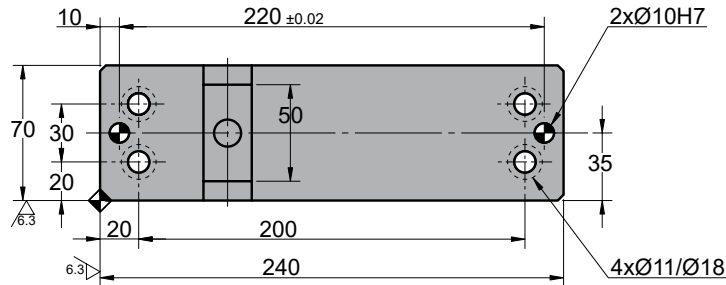
⑲	Gas Spring	1	AFC 150 038
---	------------	---	-------------

ANRP 0070

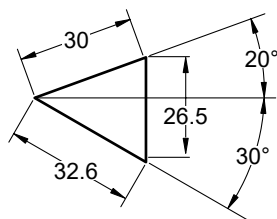
Aerial cam for pierce and flange



ANRP 0070 30



◦Cam diagram:



◦Disassembling space:



ANRP 0070

Aerial cam for pierce and flange

Stroke (mm)	Working force kN - (tons)	Spring Force N - (kgf)		Weight (Kg)	Model	W (mm)	α (mm)
		Initial F ₀	Final F ₁				
32.6	98.1 (10.0)	88.2 (9.0)	676.2 (69.0)	13.8	ANRP	0070	30
		---	2058.4 (209.9)				



Order: Model (W) (α)
ANRP 0070 30

Standard order example according to catalog sheet.
 Add options applying options table contents.

OPTIONS

	<p>G GAS SPRING</p> <p> G Gas spring included in the cam</p>

Order Options: Model (W) (α)-Option



ANRP 0070 30-G



SPARE PARTS:

- ④ Slider Plate A
- ⑦ Slide Guide A
- ⑩ Slider Plate B
- ⑰ Coil Spring
- ⑲ Gas spring (**G**)

COMPONENTS

No.		Qty.	Material
①	Cam Driver	1	GG25
②	Cam Slider	1	GGG50
③	Cam Holder	1	GGG50
④	Slider Plate A	1	Bronze + G
⑤	Guide Bar	1	CK45
⑥	Positive Return	1	CK45
⑦	Slide Guide A	1	Bronze + G
⑧	Slide Guide B	1	CK45
⑨	Cam Slider Plate	1	CK45
⑩	Slider Plate B	2	Bronze + G
⑪	Spring Guide Pin	(1)	CK45
⑫	Stopper Plate	1	CK22

No.		Qty.	Material
⑬	Locking plate	1	CK45
⑭	Stopper	2	Urethane
⑮	Dowel Pin	1	Ø8x25
⑯	Elastic Ring	1	L=12.5
⑰	Key A	1	CK45
⑱	Key B	1	CK45
⑲	Coil Spring	1	TJL25-115

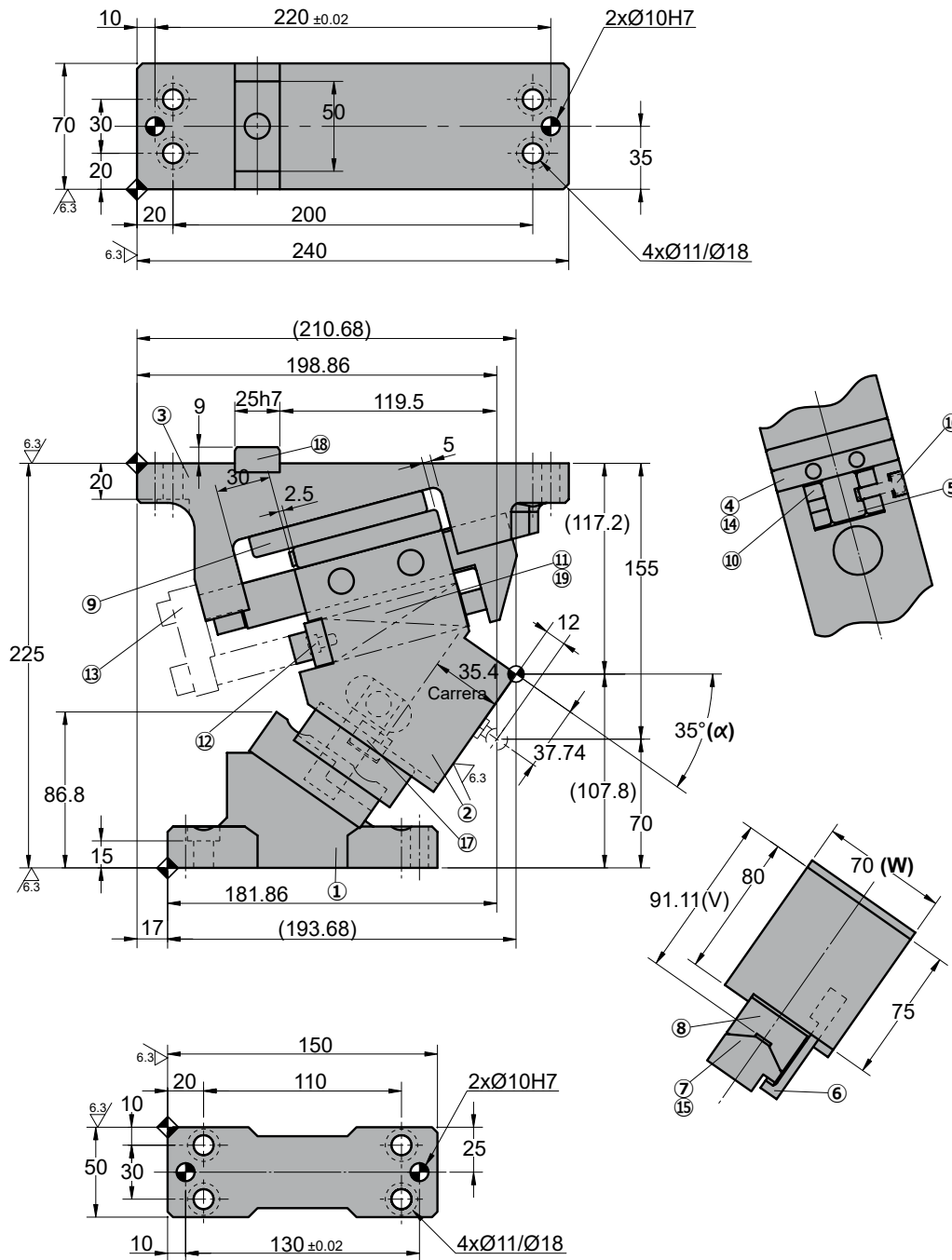
⑲	Gas Spring	1	AFC 150 038
---	------------	---	-------------

ANRP 0070

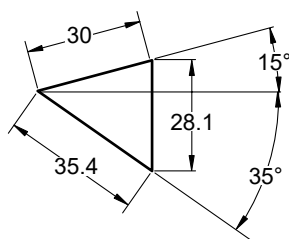
Aerial cam for pierce and flange



ANRP 0070 35



◦Cam diagram:



◦Disassembling space:



ANRP 0070

Aerial cam for pierce and flange

Stroke (mm)	Working force kN - (tons)	Spring Force N - (kgf)		Weight (Kg)	Model	W (mm)	α (mm)
		Initial F ₀	Final F ₁				
35.4	98.1 (10.0)	88.2 (9.0)	676.2 (69.0)	13.7	ANRP	0070	35
		---	2058.4 (209.9)				



Order: Model (W) (α)
ANRP 0070 35

Standard order example according to catalog sheet.
 Add options applying options table contents.

OPTIONS

	<p>G GAS SPRING</p> <p> G Gas spring included in the cam</p>

Order Options: Model (W) (α)-Option



ANRP 0070 35-G



SPARE PARTS:

- ④ Slider Plate A
- ⑦ Slide Guide A
- ⑩ Slider Plate B
- ⑲ Coil Spring
- ⑲ Gas spring (**G**)

COMPONENTS

No.		Qty.	Material
①	Cam Driver	1	GG25
②	Cam Slider	1	GGG50
③	Cam Holder	1	GGG50
④	Slider Plate A	1	Bronze + G
⑤	Guide Bar	1	CK45
⑥	Positive Return	1	CK45
⑦	Slide Guide A	1	Bronze + G
⑧	Slide Guide B	1	CK45
⑨	Cam Slider Plate	1	CK45
⑩	Slider Plate B	2	Bronze + G
⑪	Spring Guide Pin	(1)	CK45
⑫	Stopper Plate	1	CK22

No.		Qty.	Material
⑬	Locking plate	1	CK45
⑭	Stopper	2	Urethane
⑮	Dowel Pin	1	Ø8x25
⑯	Elastic Ring	1	L=12.5
⑰	Key A	1	CK45
⑱	Key B	1	CK45
⑲	Coil Spring	1	TJL25-115

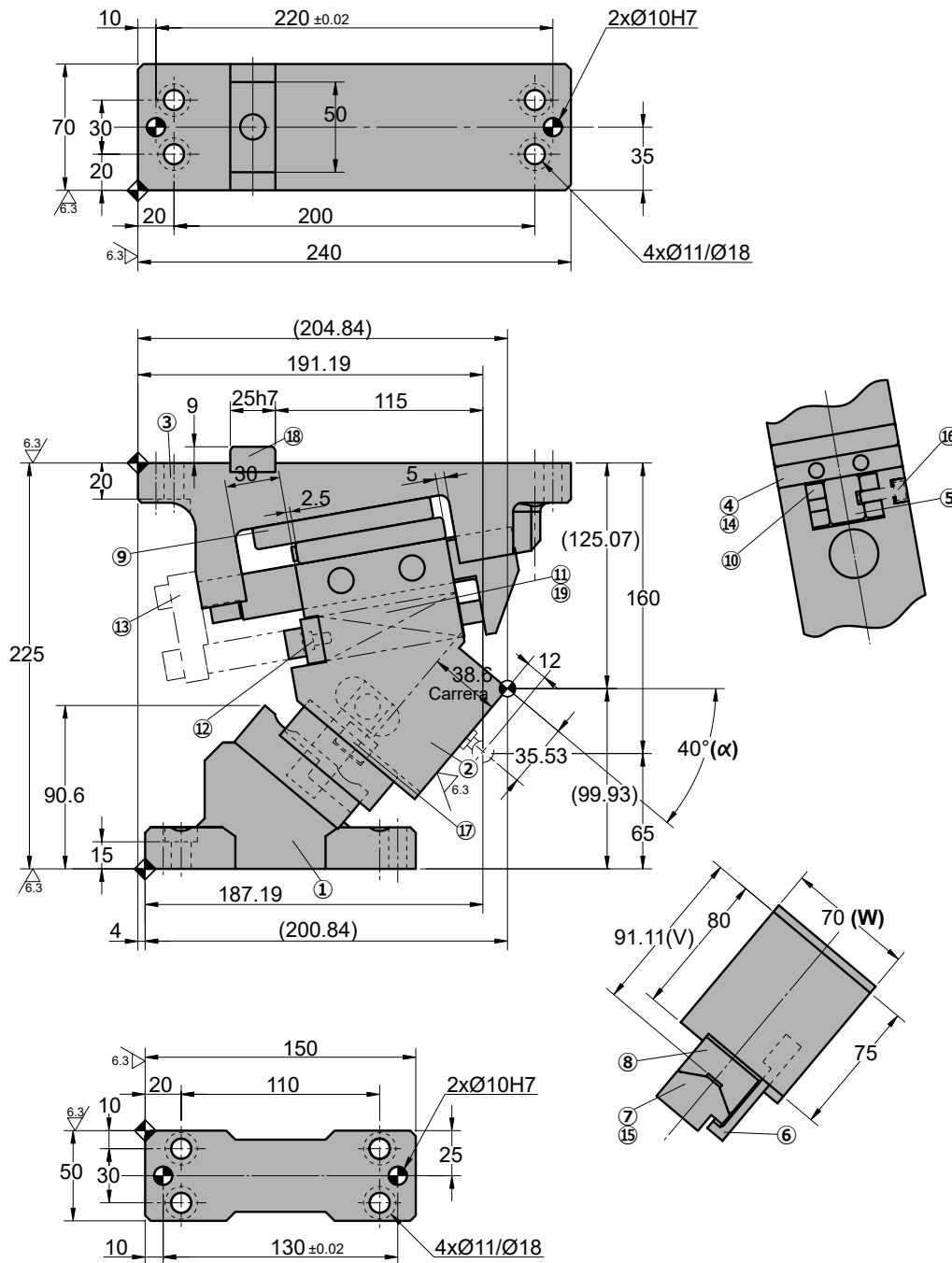
⑲	Gas Spring	1	AFC 150 038
---	------------	---	-------------

ANRP 0070

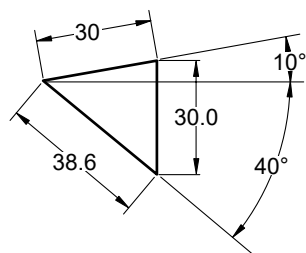
Aerial cam for pierce and flange



ANRP 0070 40



◦Cam diagram:



◦Disassembling space:



ANRP 0070

Aerial cam for pierce and flange

Stroke (mm)	Working force kN - (tons)	Spring Force N - (kgf)		Weight (Kg)	Model	W (mm)	α (mm)
		Initial F ₀	Final F ₁				
38.6	98.1 (10.0)	88.2 (9.0)	676.2 (69.0)	13.8	ANRP	0070	40
		---	2058.4 (209.9)				



Order: Model (W) (α)
ANRP 0070 40

Standard order example according to catalog sheet. Add options applying options table contents.

OPTIONS

	<p>G GAS SPRING</p> <p> G Gas spring included in the cam</p>

Order Options: Model (W) (α)-Option



ANRP 0070 40-G



SPARE PARTS:

- ④ Slider Plate A
- ⑦ Slide Guide A
- ⑩ Slider Plate B
- ⑲ Coil Spring
- ⑲ Gas spring (**G**)

COMPONENTS

No.		Qty.	Material
①	Cam Driver	1	GG25
②	Cam Slider	1	GGG50
③	Cam Holder	1	GGG50
④	Slider Plate A	1	Bronze + G
⑤	Guide Bar	1	CK45
⑥	Positive Return	1	CK45
⑦	Slide Guide A	1	Bronze + G
⑧	Slide Guide B	1	CK45
⑨	Cam Slider Plate	1	CK45
⑩	Slider Plate B	2	Bronze + G
⑪	Spring Guide Pin	(1)	CK45
⑫	Stopper Plate	1	CK22

No.		Qty.	Material
⑬	Locking plate	1	CK45
⑭	Stopper	2	Urethane
⑮	Dowel Pin	1	Ø8x25
⑯	Elastic Ring	1	L=12.5
⑰	Key A	1	CK45
⑱	Key B	1	CK45
⑲	Coil Spring	1	TJL25-115

⑲	Gas Spring	1	AFC 150 038
---	------------	---	-------------



ANRP 0070

Aerial cam for pierce and flange

Stroke (mm)	Working force kN - (tons)	Spring Force N - (kgf)		Weight (Kg)	Model	W (mm)	α (mm)
		Initial F ₀	Final F ₁				
42.3	98.1 (10.0)	88.2 (9.0)	676.2 (69.0)	13.8	ANRP	0070	45
		---	2058.4 (209.9)				



Order: Model (W) (α)
ANRP 0070 45

Standard order example according to catalog sheet. Add options applying options table contents.

OPTIONS

	<p>G GAS SPRING</p> <p> G Gas spring included in the cam</p>

Order Options: Model (W) (α)-Option



ANRP 0070 45-G



SPARE PARTS:

- ④ Slider Plate A
- ⑦ Slide Guide A
- ⑩ Slider Plate B
- ⑲ Coil Spring
- ⑲ Gas spring (**G**)

COMPONENTS

No.		Qty.	Material
①	Cam Driver	1	GG25
②	Cam Slider	1	GGG50
③	Cam Holder	1	GGG50
④	Slider Plate A	1	Bronze + G
⑤	Guide Bar	1	CK45
⑥	Positive Return	1	CK45
⑦	Slide Guide A	1	Bronze + G
⑧	Slide Guide B	1	CK45
⑨	Cam Slider Plate	1	CK45
⑩	Slider Plate B	2	Bronze + G
⑪	Spring Guide Pin	(1)	CK45
⑫	Stopper Plate	1	CK22

No.		Qty.	Material
⑬	Locking plate	1	CK45
⑭	Stopper	2	Urethane
⑮	Dowel Pin	1	Ø8x25
⑯	Elastic Ring	1	L=12.5
⑰	Key A	1	CK45
⑱	Key B	1	CK45
⑲	Coil Spring	1	TJL25-115

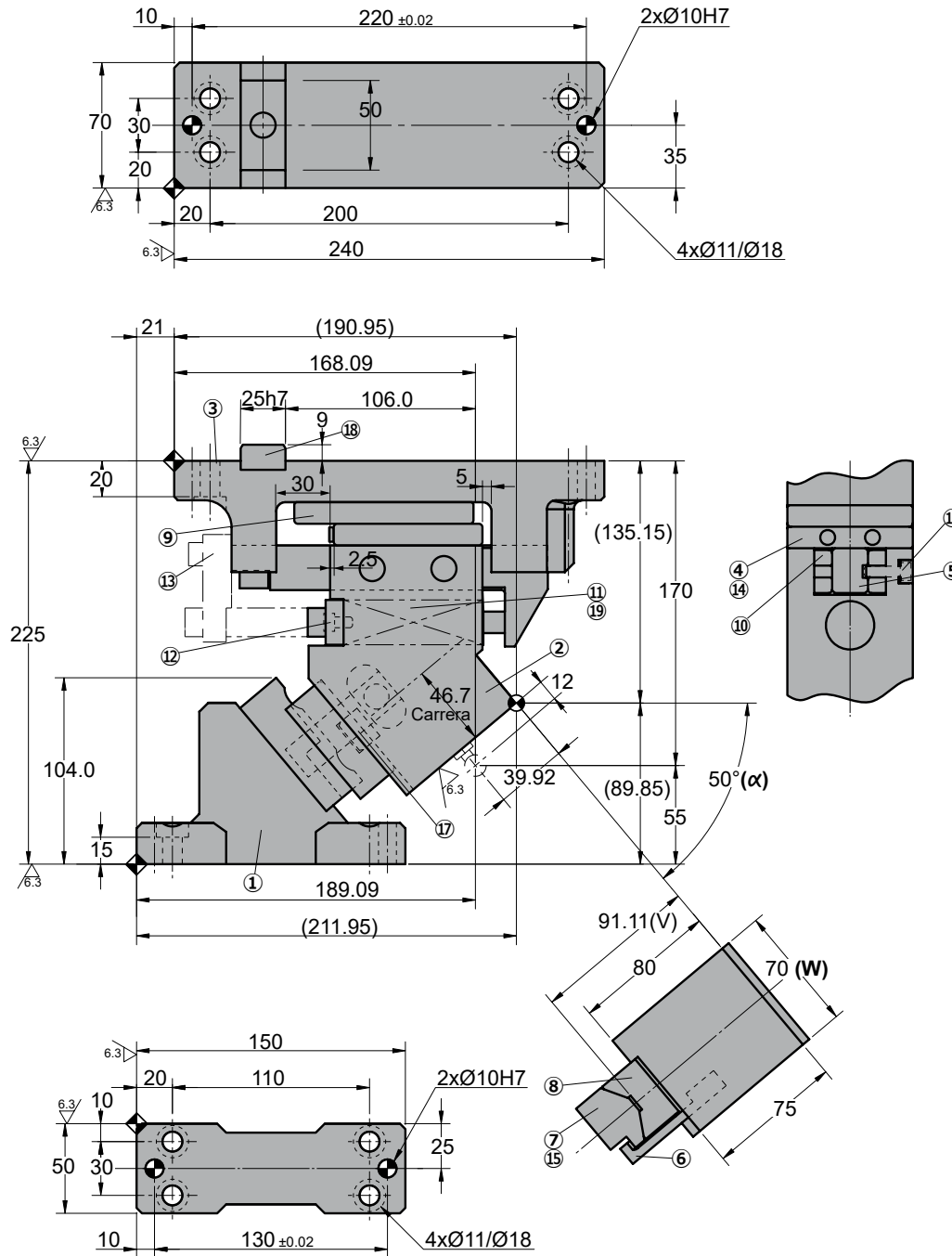
⑲	Gas Spring	1	AFC 150 038
---	------------	---	-------------

ANRP 0070

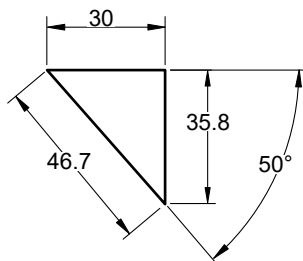
Aerial cam for pierce and flange



ANRP 0070 50



◦Cam diagram:



◦Disassembling space:



ANRP 0070

Aerial cam for pierce and flange

Stroke (mm)	Working force kN - (tons)	Spring Force N - (kgf)		Weight (Kg)	Model	W (mm)	α (mm)
		Initial F ₀	Final F ₁				
46.7	98.1 (10.0)	88.2 (9.0)	676.2 (69.0)	13.9	ANRP	0070	50
		---	2058.4 (209.9)				



Order: Model (W) (α)
ANRP 0070 50

Standard order example according to catalog sheet.
 Add options applying options table contents.

OPTIONS

	<p>G GAS SPRING</p> <p> G Gas spring included in the cam</p>

Order Options: Model (W) (α)-Option



ANRP 0070 50-G



SPARE PARTS:

- ④ Slider Plate A
- ⑦ Slide Guide A
- ⑩ Slider Plate B
- ⑲ Coil Spring
- ⑲ Gas spring (**G**)

COMPONENTS

No.		Qty.	Material
①	Cam Driver	1	GG25
②	Cam Slider	1	GGG50
③	Cam Holder	1	GGG50
④	Slider Plate A	1	Bronze + G
⑤	Guide Bar	1	CK45
⑥	Positive Return	1	CK45
⑦	Slide Guide A	1	Bronze + G
⑧	Slide Guide B	1	CK45
⑨	Cam Slider Plate	1	CK45
⑩	Slider Plate B	2	Bronze + G
⑪	Spring Guide Pin	(1)	CK45
⑫	Stopper Plate	1	CK22

No.		Qty.	Material
⑬	Locking plate	1	CK45
⑭	Stopper	2	Urethane
⑮	Dowel Pin	1	Ø8x25
⑯	Elastic Ring	1	L=12.5
⑰	Key A	1	CK45
⑱	Key B	1	CK45
⑲	Coil Spring	1	TJL25-115

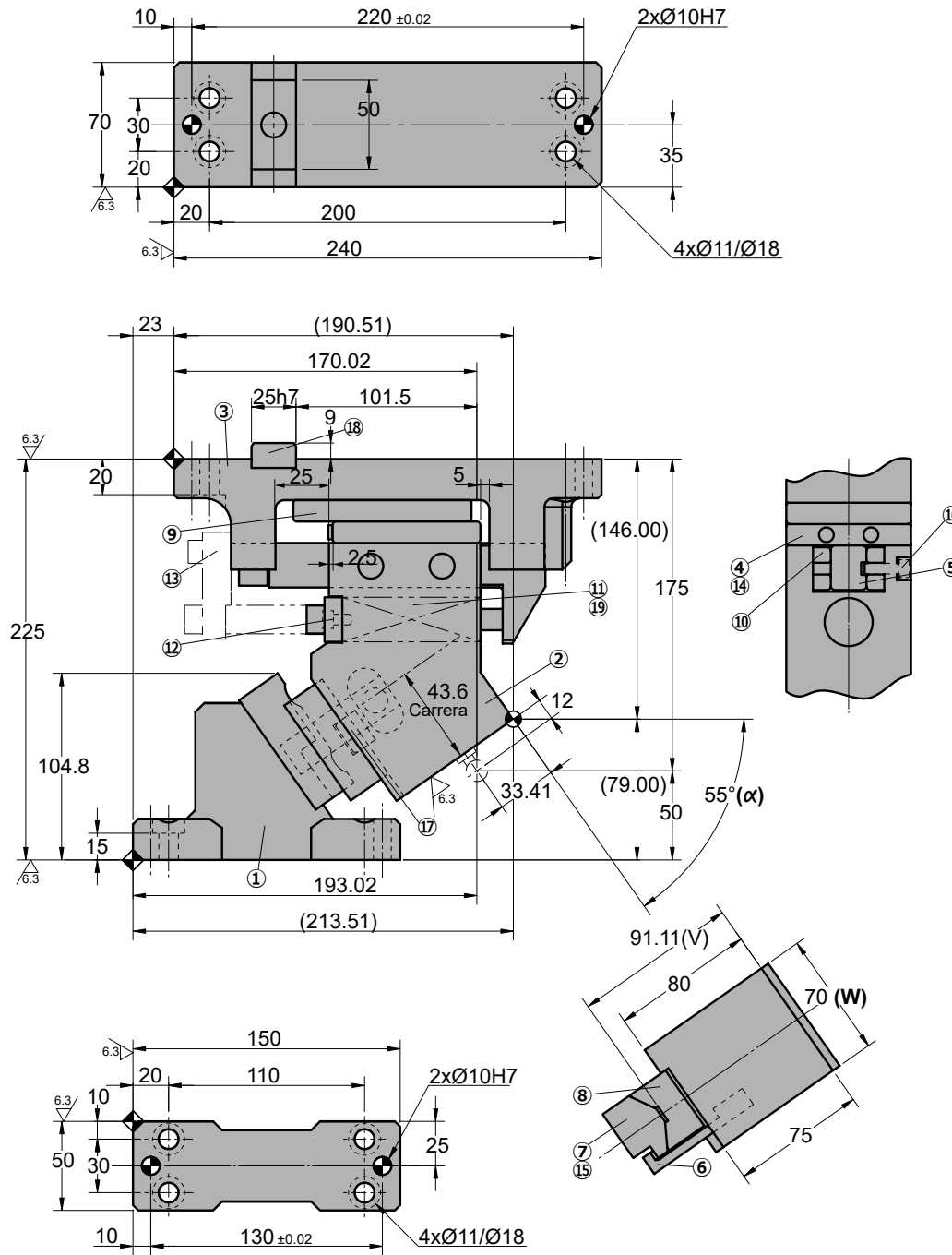
⑲	Gas Spring	1	AFC 150 038
---	------------	---	-------------

ANRP 0070

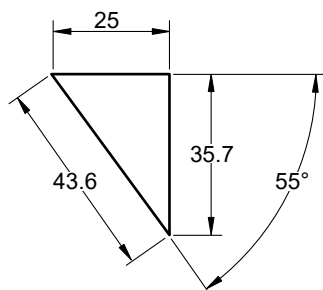
Aerial cam for pierce and flange



ANRP 0070 55



◦Cam diagram:



◦Disassembling space:



ANRP 0070

Aerial cam for pierce and flange

Stroke (mm)	Working force kN - (tons)	Spring Force N - (kgf)		Weight (Kg)	Model	W (mm)	α (mm)
		Initial F ₀	Final F ₁				
43.6	98.1 (10.0)	88.2 (9.0)	578.2 (59.0)	14.1	ANRP	0070	55
		---	1938.1 (197.7)				



Order: Model (W) (α)
ANRP 0070 55

Standard order example according to catalog sheet. Add options applying options table contents.

OPTIONS

	<p>G GAS SPRING</p> <p> G Gas spring included in the cam</p>

Order Options: Model (W) (α)-Option



ANRP 0070 55-G



SPARE PARTS:

- ④ Slider Plate A
- ⑦ Slide Guide A
- ⑩ Slider Plate B
- ⑲ Coil Spring
- ⑲ Gas spring (**G**)

COMPONENTS

No.		Qty.	Material
①	Cam Driver	1	GG25
②	Cam Slider	1	GGG50
③	Cam Holder	1	GGG50
④	Slider Plate A	1	Bronze + G
⑤	Guide Bar	1	CK45
⑥	Positive Return	1	CK45
⑦	Slide Guide A	1	Bronze + G
⑧	Slide Guide B	1	CK45
⑨	Cam Slider Plate	1	CK45
⑩	Slider Plate B	2	Bronze + G
⑪	Spring Guide Pin	(1)	CK45
⑫	Stopper Plate	1	CK22

No.		Qty.	Material
⑬	Locking plate	1	CK45
⑭	Stopper	2	Urethane
⑮	Dowel Pin	1	Ø8x25
⑯	Elastic Ring	1	L=12.5
⑰	Key A	1	CK45
⑱	Key B	1	CK45
⑲	Coil Spring	1	TJL25-115

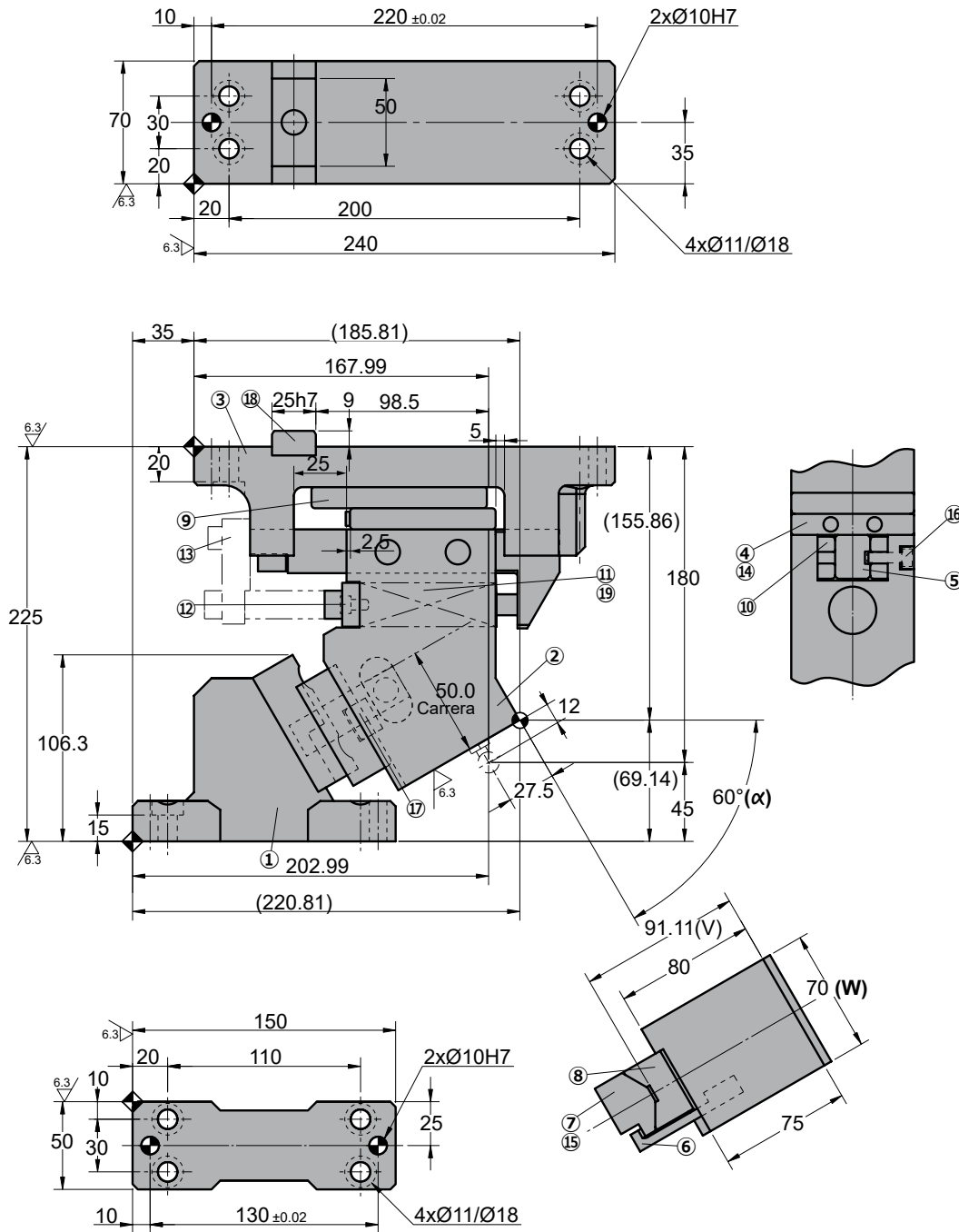
⑲	Gas Spring	1	AFC 150 038
---	------------	---	-------------

ANRP 0070

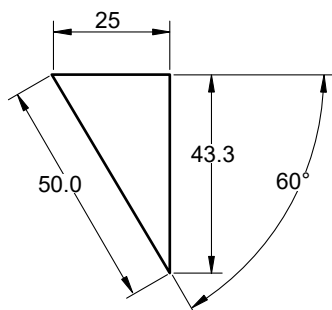
Aerial cam for pierce and flange



ANRP 0070 60



◦Cam diagram:



◦Disassembling space:



ANRP 0070

Aerial cam for pierce and flange

Stroke (mm)	Working force kN - (tons)	Spring Force N - (kgf)		Weight (Kg)	Model	W (mm)	α (mm)
		Initial F ₀	Final F ₁				
50.0	98.1 (10.0)	88.2 (9.0)	578.2 (59.0)	14.5	ANRP	0070	60
		---	1938.1 (197.7)				



Order: Model (W) (α)
ANRP 0070 60

Standard order example according to catalog sheet. Add options applying options table contents.

OPTIONS

	<p>G GAS SPRING</p> <p> G Gas spring included in the cam</p>

Order Options: Model (W) (α)-Option



ANRP 0070 60-G



SPARE PARTS:

- ④ Slider Plate A
- ⑦ Slide Guide A
- ⑩ Slider Plate B
- ⑲ Coil Spring
- ⑲ Gas spring (**G**)

COMPONENTS

No.		Qty.	Material
①	Cam Driver	1	GG25
②	Cam Slider	1	GGG50
③	Cam Holder	1	GGG50
④	Slider Plate A	1	Bronze + G
⑤	Guide Bar	1	CK45
⑥	Positive Return	1	CK45
⑦	Slide Guide A	1	Bronze + G
⑧	Slide Guide B	1	CK45
⑨	Cam Slider Plate	1	CK45
⑩	Slider Plate B	2	Bronze + G
⑪	Spring Guide Pin	(1)	CK45
⑫	Stopper Plate	1	CK22

No.		Qty.	Material
⑬	Locking plate	1	CK45
⑭	Stopper	2	Urethane
⑮	Dowel Pin	1	Ø8x25
⑯	Elastic Ring	1	L=12.5
⑰	Key A	1	CK45
⑱	Key B	1	CK45
⑲	Coil Spring	1	TJL25-115

⑲	Gas Spring	1	AFC 150 038
---	------------	---	-------------

ANRP 0070

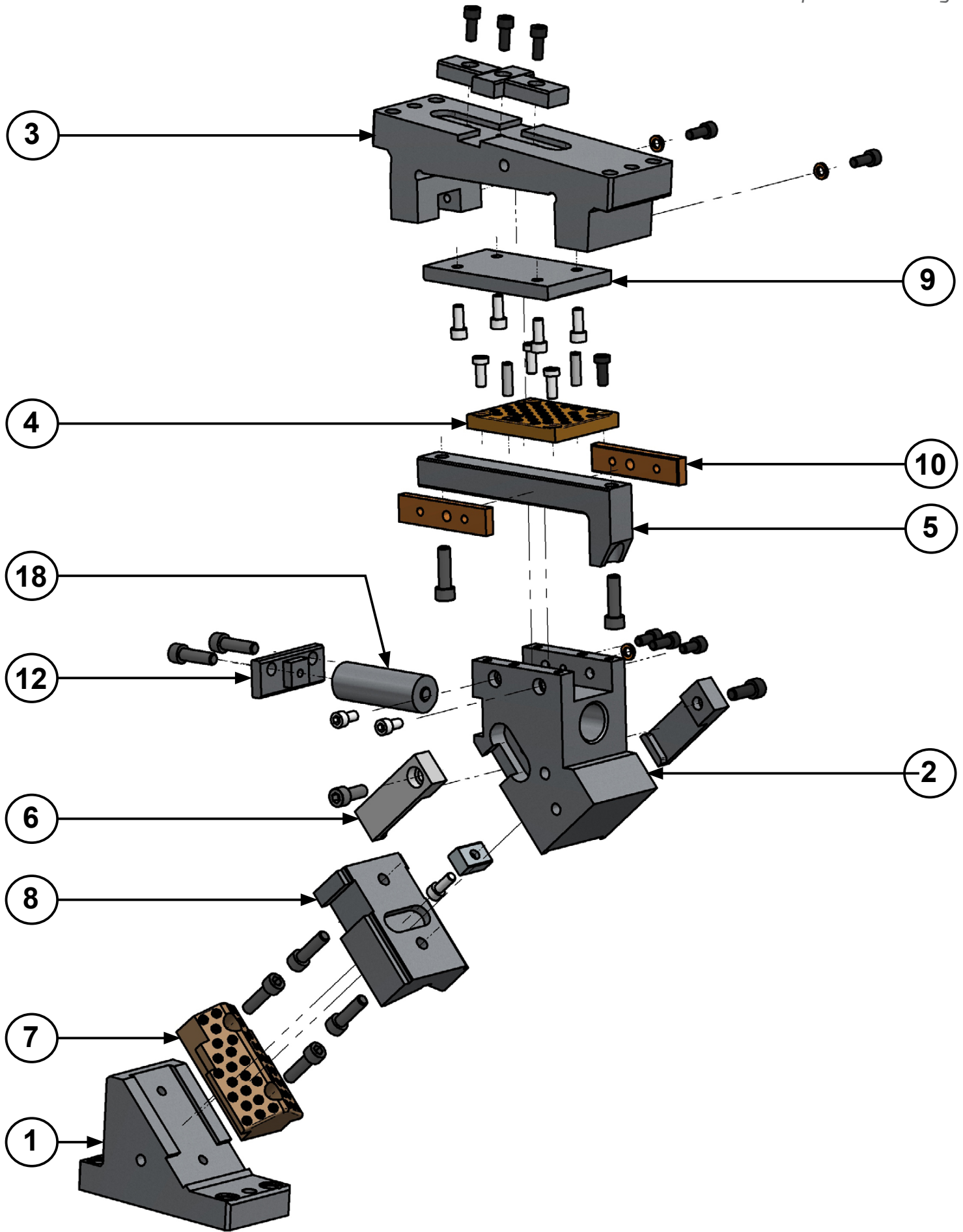


Aerial cam for pierce and flange



ANRP 0080

Aerial cam for pierce and flange

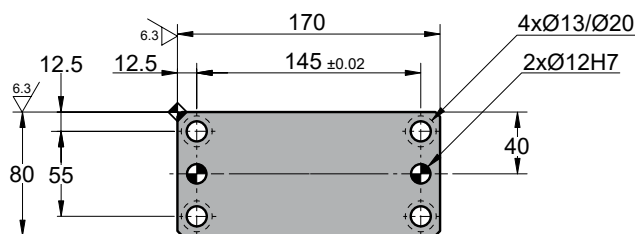
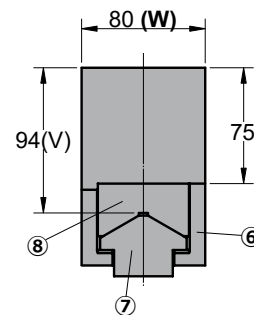
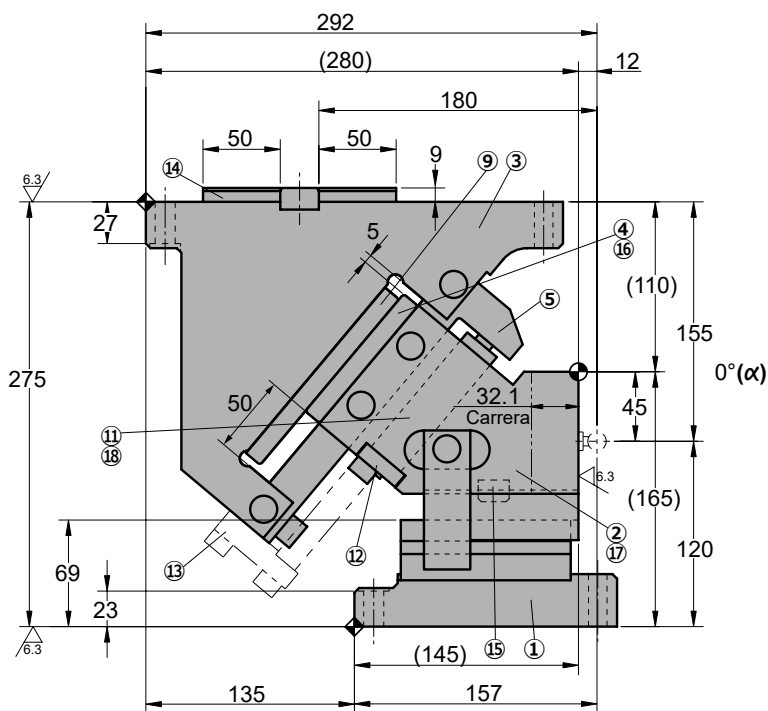
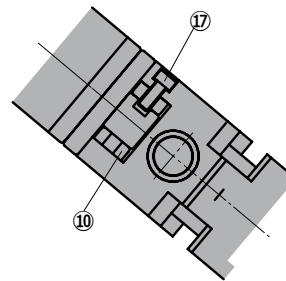
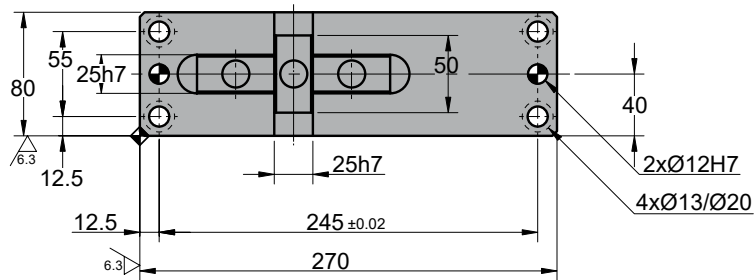


ANRP 0080

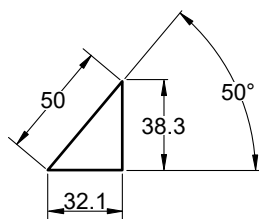
Aerial cam for pierce and flange



ANRP 0080 00



◦Cam diagram:



◦Disassembling space:



ANRP 0080

Aerial cam for pierce and flange

Stroke (mm)	Working force kN - (tons)	Spring Force N - (kgf)		Weight (Kg)	Model	W (mm)	α (mm)
		Initial F ₀	Final F ₁				
32.1	166.7 (17.0)	73.5 (7.5)	1223.6 (124.8)	27.9	ANRP	0080	00
		---	1960.6 (200.0)				



Order: Model (W) (α)
ANRP 0080 00

Standard order example according to catalog sheet. Add options applying options table contents.

OPTIONS

	<p>G GAS SPRING</p> <p> G Gas spring included in the cam</p>

Order Options: Model (W) (α)-Option



ANRP 0080 00-G



SPARE PARTS:

- ④ Slider Plate A
- ⑦ Slide Guide A
- ⑩ Slider Plate B
- ⑱ Coil Spring
- ⑲ Gas spring (G)

COMPONENTS

No.		Qty.	Material
①	Cam Driver	1	GG25
②	Cam Slider	1	GG25
③	Cam Holder	1	GGG50
④	Slider Plate A	1	Bronze + G
⑤	Guide Bar	1	CK45
⑥	Positive Return	2	CK45
⑦	Slide Guide A	1	Bronze + G
⑧	Slide Guide B	1	CK45
⑨	Cam Slider Plate	1	CK45
⑩	Slider Plate B	2	Bronze + G
⑪	Spring Guide Pin	(1)	CK45
⑫	Stopper Plate	1	CK22

No.		Qty.	Material
⑬	Locking plate	1	CK45
⑭	Key A	3	CK45
⑮	Key B	1	CK45
⑯	Dowel Pin	2	Ø8 x 25
⑰	Elastic Ring	3	L=16
⑱	Coil Spring	1	TJL32-152

⑲	Gas Spring	1	AG 150 050
---	------------	---	------------



ANRP 0080

Aerial cam for pierce and flange

Stroke (mm)	Working force kN - (tons)	Spring Force N - (kgf)		Weight (Kg)	Model	W (mm)	α (mm)
		Initial F ₀	Final F ₁				
35.5	166.7 (17.0)	73.5 (7.5)	1223.6 (124.8)	27.5	ANRP	0080	05
		---	1960.6 (200.0)				



Order: Model (W) (α)
ANRP 0080 05

Standard order example according to catalog sheet. Add options applying options table contents.

OPTIONS

	<p>G GAS SPRING</p> <p> G Gas spring included in the cam</p>

Order Options: Model (W) (α)-Option



ANRP 0080 05-G



SPARE PARTS:

- ④ Slider Plate A
- ⑦ Slide Guide A
- ⑩ Slider Plate B
- ⑱ Coil Spring
- ⑲ Gas spring (**G**)

COMPONENTS

No.		Qty.	Material
①	Cam Driver	1	GG25
②	Cam Slider	1	GG25
③	Cam Holder	1	GGG50
④	Slider Plate A	1	Bronze + G
⑤	Guide Bar	1	CK45
⑥	Positive Return	2	CK45
⑦	Slide Guide A	1	Bronze + G
⑧	Slide Guide B	1	CK45
⑨	Cam Slider Plate	1	CK45
⑩	Slider Plate B	2	Bronze + G
⑪	Spring Guide Pin	(1)	CK45
⑫	Stopper Plate	1	CK22

No.		Qty.	Material
⑬	Locking plate	1	CK45
⑭	Key A	3	CK45
⑮	Key B	1	CK45
⑯	Dowel Pin	2	Ø8 x 25
⑰	Elastic Ring	3	L=16
⑱	Coil Spring	1	TJL32-152

⑲	Gas Spring	1	AG 150 050
---	------------	---	------------



ANRP 0080

Aerial cam for pierce and flange

Stroke (mm)	Working force kN - (tons)	Spring Force N - (kgf)		Weight (Kg)	Model	W (mm)	α (mm)
		Initial F ₀	Final F ₁				
38.9	166.7 (17.0)	73.5 (7.5)	1223.6 (124.8)	26.9	ANRP	0080	10
		---	1960.6 (200.0)				



Order: Model (W) (α)
ANRP 0080 10

Standard order example according to catalog sheet. Add options applying options table contents.

OPTIONS

	<p>G GAS SPRING</p> <p> G Gas spring included in the cam</p>

Order Options: Model (W) (α)-Option



ANRP 0080 10-G



SPARE PARTS:

- ④ Slider Plate A
- ⑦ Slide Guide A
- ⑩ Slider Plate B
- ⑱ Coil Spring
- ⑲ Gas spring (**G**)

COMPONENTS

No.		Qty.	Material
①	Cam Driver	1	GG25
②	Cam Slider	1	GG25
③	Cam Holder	1	GGG50
④	Slider Plate A	1	Bronze + G
⑤	Guide Bar	1	CK45
⑥	Positive Return	2	CK45
⑦	Slide Guide A	1	Bronze + G
⑧	Slide Guide B	1	CK45
⑨	Cam Slider Plate	1	CK45
⑩	Slider Plate B	2	Bronze + G
⑪	Spring Guide Pin	(1)	CK45
⑫	Stopper Plate	1	CK22

No.		Qty.	Material
⑬	Locking plate	1	CK45
⑭	Key A	3	CK45
⑮	Key B	1	CK45
⑯	Dowel Pin	2	Ø8 x 25
⑰	Elastic Ring	3	L=16
⑱	Coil Spring	1	TJL32-152

⑲	Gas Spring	1	AG 150 050
---	------------	---	------------



ANRP 0080

Aerial cam for pierce and flange

Stroke (mm)	Working force kN - (tons)	Spring Force N - (kgf)		Weight (Kg)	Model	W (mm)	α (mm)
		Initial F ₀	Final F ₁				
42.4	166.7 (17.0)	73.5 (7.5)	1223.6 (124.8)	26.5	ANRP	0080	15
		---	1960.6 (200.0)				



Order: Model (W) (α)
ANRP 0080 15

Standard order example according to catalog sheet.
 Add options applying options table contents.

OPTIONS

	<p>G GAS SPRING</p> <p> G Gas spring included in the cam</p>

Order Options: Model (W) (α)-Option



ANRP 0080 15-G



SPARE PARTS:

- ④ Slider Plate A
- ⑦ Slide Guide A
- ⑩ Slider Plate B
- ⑱ Coil Spring
- ⑲ Gas spring (G)

COMPONENTS

No.		Qty.	Material
①	Cam Driver	1	GG25
②	Cam Slider	1	GG25
③	Cam Holder	1	GGG50
④	Slider Plate A	1	Bronze + G
⑤	Guide Bar	1	CK45
⑥	Positive Return	2	CK45
⑦	Slide Guide A	1	Bronze + G
⑧	Slide Guide B	1	CK45
⑨	Cam Slider Plate	1	CK45
⑩	Slider Plate B	2	Bronze + G
⑪	Spring Guide Pin	(1)	CK45
⑫	Stopper Plate	1	CK22

No.		Qty.	Material
⑬	Locking plate	1	CK45
⑭	Key A	3	CK45
⑮	Key B	1	CK45
⑯	Dowel Pin	2	Ø8 x 25
⑰	Elastic Ring	3	L=16
⑱	Coil Spring	1	TJL32-152

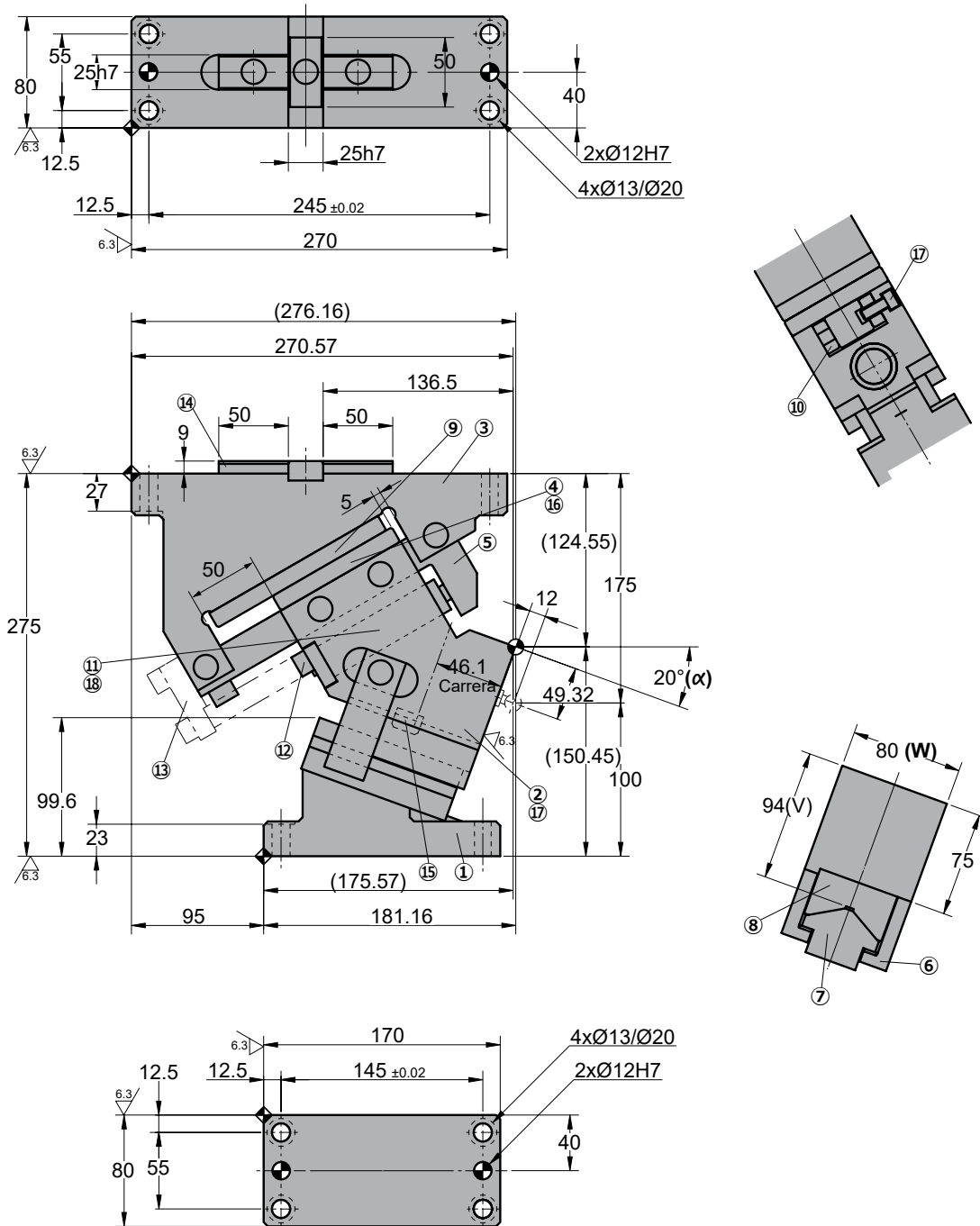
⑲	Gas Spring	1	AG 150 050
---	------------	---	------------

ANRP 0080

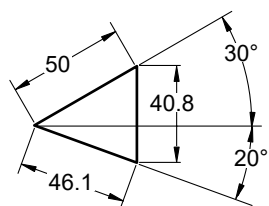
Aerial cam for pierce and flange



ANRP 0080 20



◦Cam diagram:



◦Disassembling space:



ANRP 0080

Aerial cam for pierce and flange

Stroke (mm)	Working force kN - (tons)	Spring Force N - (kgf)		Weight (Kg)	Model	W (mm)	α (mm)
		Initial F ₀	Final F ₁				
46.1	166.7 (17.0)	73.5 (7.5)	1223.6 (124.8)	26.0	ANRP	0080	20
		---	1960.6 (200.0)				



Order: Model (W) (α)
ANRP 0080 20

Standard order example according to catalog sheet. Add options applying options table contents.

OPTIONS

	<p>G GAS SPRING</p> <p> G Gas spring included in the cam</p>

Order Options: Model (W) (α)-Option



ANRP 0080 20-G



SPARE PARTS:

- ④ Slider Plate A
- ⑦ Slide Guide A
- ⑩ Slider Plate B
- ⑱ Coil Spring
- ⑲ Gas spring (G)

COMPONENTS

No.		Qty.	Material
①	Cam Driver	1	GG25
②	Cam Slider	1	GG25
③	Cam Holder	1	GGG50
④	Slider Plate A	1	Bronze + G
⑤	Guide Bar	1	CK45
⑥	Positive Return	2	CK45
⑦	Slide Guide A	1	Bronze + G
⑧	Slide Guide B	1	CK45
⑨	Cam Slider Plate	1	CK45
⑩	Slider Plate B	2	Bronze + G
⑪	Spring Guide Pin	(1)	CK45
⑫	Stopper Plate	1	CK22

No.		Qty.	Material
⑬	Locking plate	1	CK45
⑭	Key A	3	CK45
⑮	Key B	1	CK45
⑯	Dowel Pin	2	Ø8 x 25
⑰	Elastic Ring	3	L=16
⑱	Coil Spring	1	TJL32-152

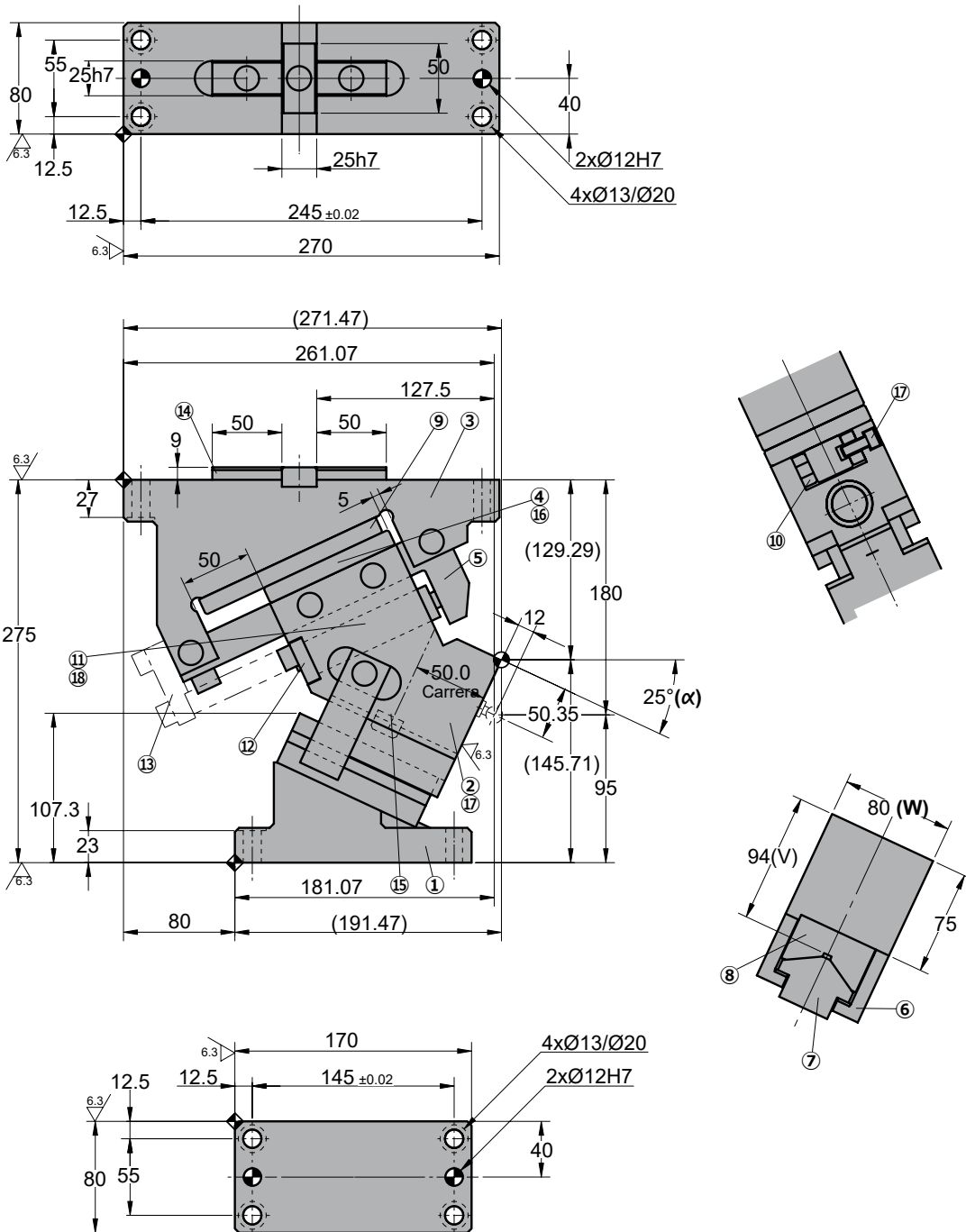
⑲	Gas Spring	1	AG 150 050
---	------------	---	------------

ANRP 0080

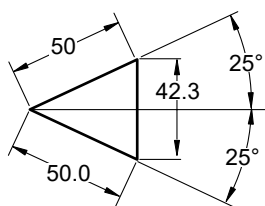
Aerial cam for pierce and flange



ANRP 0080 25



◦Cam diagram:



◦Disassembling space:



ANRP 0080

Aerial cam for pierce and flange

Stroke (mm)	Working force kN - (tons)	Spring Force N - (kgf)		Weight (Kg)	Model	W (mm)	α (mm)
		Initial F ₀	Final F ₁				
50.0	166.7 (17.0)	73.5 (7.5)	1223.6 (124.8)	25.9	ANRP	0080	25
		---	1960.6 (200.0)				



Order: Model (W) (α)
ANRP 0080 25

Standard order example according to catalog sheet.
 Add options applying options table contents.

OPTIONS

	<p>G GAS SPRING</p> <p> G Gas spring included in the cam</p>

Order Options: Model (W) (α)-Option

ANRP 0080 25-G



SPARE PARTS:

- ④ Slider Plate A
- ⑦ Slide Guide A
- ⑩ Slider Plate B
- ⑱ Coil Spring
- ⑲ Gas spring (**G**)

COMPONENTS

No.		Qty.	Material
①	Cam Driver	1	GG25
②	Cam Slider	1	GG25
③	Cam Holder	1	GGG50
④	Slider Plate A	1	Bronze + G
⑤	Guide Bar	1	CK45
⑥	Positive Return	2	CK45
⑦	Slide Guide A	1	Bronze + G
⑧	Slide Guide B	1	CK45
⑨	Cam Slider Plate	1	CK45
⑩	Slider Plate B	2	Bronze + G
⑪	Spring Guide Pin	(1)	CK45
⑫	Stopper Plate	1	CK22

No.		Qty.	Material
⑬	Locking plate	1	CK45
⑭	Key A	3	CK45
⑮	Key B	1	CK45
⑯	Dowel Pin	2	Ø8 x 25
⑰	Elastic Ring	3	L=16
⑱	Coil Spring	1	TJL32-152

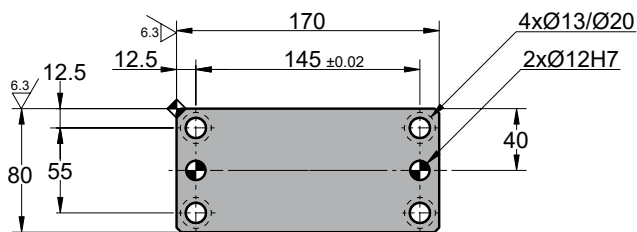
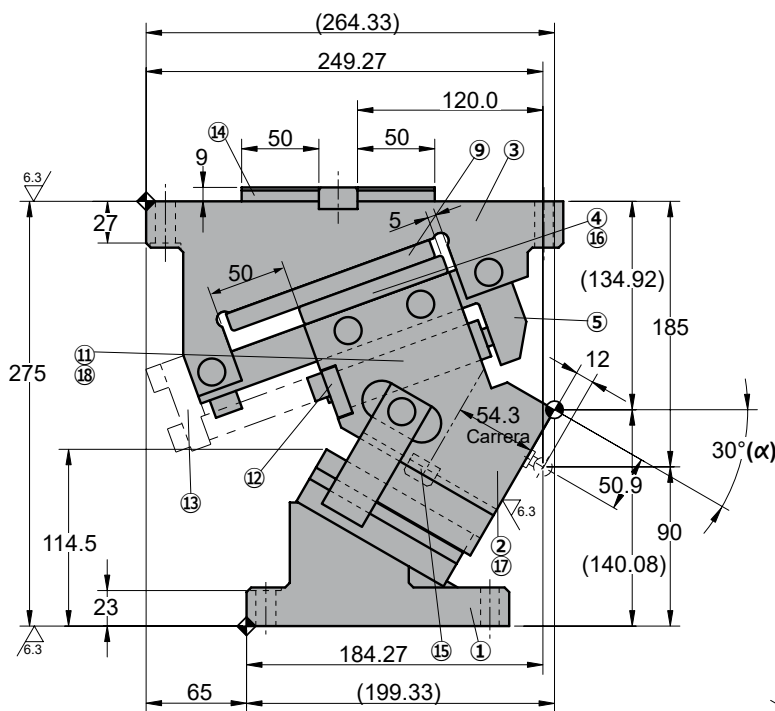
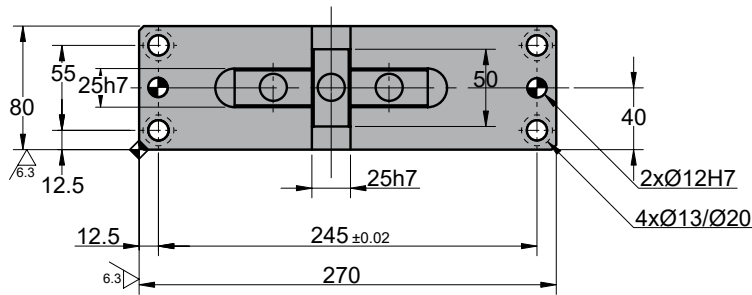
⑲	Gas Spring	1	AG 150 050
---	------------	---	------------

ANRP 0080

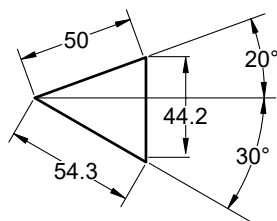
Aerial cam for pierce and flange



ANRP 0080 30



◦Cam diagram:



◦Disassembling space:



ANRP 0080

Aerial cam for pierce and flange

Stroke (mm)	Working force kN - (tons)	Spring Force N - (kgf)		Weight (Kg)	Model	W (mm)	α (mm)
		Initial F ₀	Final F ₁				
54.3	166.7 (17.0)	73.5 (7.5)	1223.6 (124.8)	25.3	ANRP	0080	30
		---	1960.6 (200.0)				



Order: Model (W) (α)
ANRP 0080 30

Standard order example according to catalog sheet. Add options applying options table contents.

OPTIONS

	<p>G GAS SPRING</p> <p> G Gas spring included in the cam</p>

Order Options: Model (W) (α)-Option



ANRP 0080 30-G



SPARE PARTS:

- ④ Slider Plate A
- ⑦ Slide Guide A
- ⑩ Slider Plate B
- ⑱ Coil Spring
- ⑱ Gas spring (**G**)

COMPONENTS

No.		Qty.	Material
①	Cam Driver	1	GG25
②	Cam Slider	1	GG25
③	Cam Holder	1	GGG50
④	Slider Plate A	1	Bronze + G
⑤	Guide Bar	1	CK45
⑥	Positive Return	2	CK45
⑦	Slide Guide A	1	Bronze + G
⑧	Slide Guide B	1	CK45
⑨	Cam Slider Plate	1	CK45
⑩	Slider Plate B	2	Bronze + G
⑪	Spring Guide Pin	(1)	CK45
⑫	Stopper Plate	1	CK22

No.		Qty.	Material
⑬	Locking plate	1	CK45
⑭	Key A	3	CK45
⑮	Key B	1	CK45
⑯	Dowel Pin	2	Ø8 x 25
⑰	Elastic Ring	3	L=16
⑱	Coil Spring	1	TJL32-152

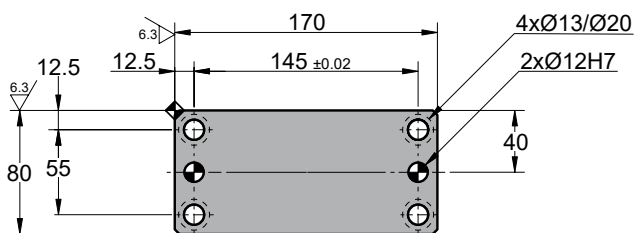
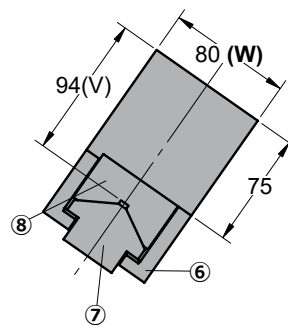
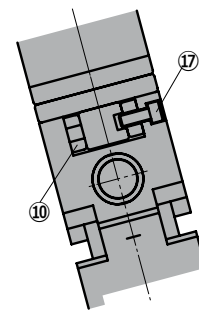
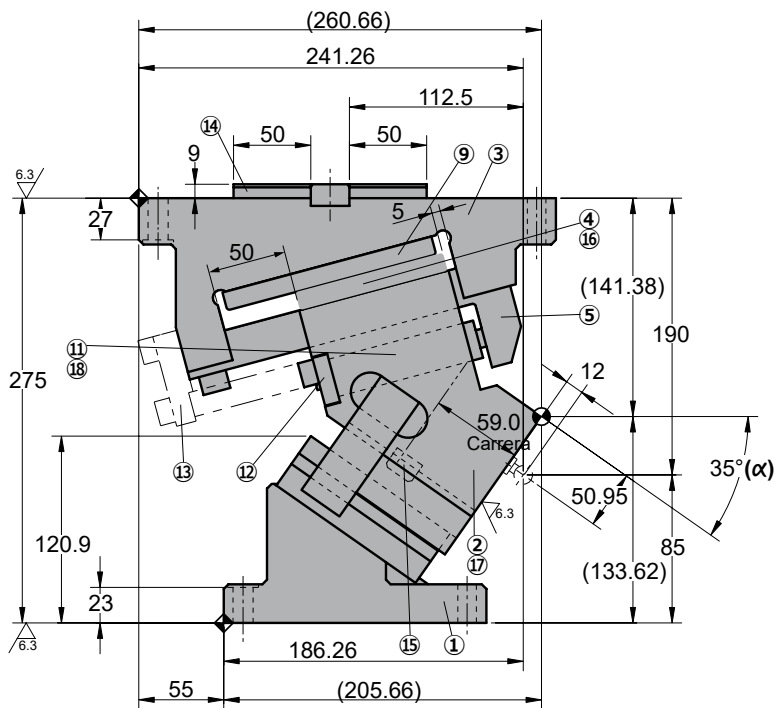
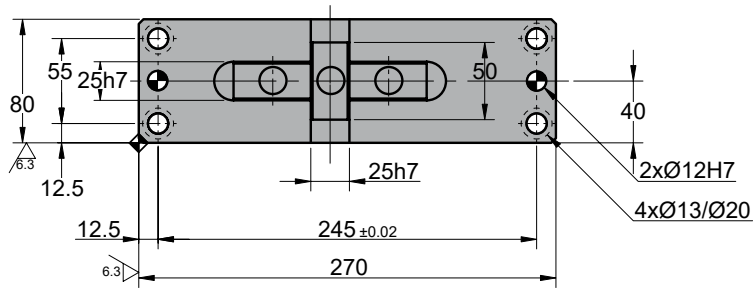
⑱	Gas Spring	1	AG 150 050
---	------------	---	------------

ANRP 0080

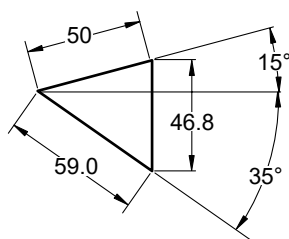
Aerial cam for pierce and flange



ANRP 0080 35



◦Cam diagram:



◦Disassembling space:



ANRP 0080

Aerial cam for pierce and flange

Stroke (mm)	Working force kN - (tons)	Spring Force N - (kgf)		Weight (Kg)	Model	W (mm)	α (mm)
		Initial F ₀	Final F ₁				
59.0	166.7 (17.0)	73.5 (7.5)	1223.6 (124.8)	25.0	ANRP	0080	35
		---	1960.6 (200.0)				



Order: Model (W) (α)
ANRP 0080 35

Standard order example according to catalog sheet.
 Add options applying options table contents.

OPTIONS

	<p>G GAS SPRING</p> <p> G Gas spring included in the cam</p>

Order Options: Model (W) (α)-Option



ANRP 0080 35-G



SPARE PARTS:

- ④ Slider Plate A
- ⑦ Slide Guide A
- ⑩ Slider Plate B
- ⑱ Coil Spring
- ⑲ Gas spring (**G**)

COMPONENTS

No.		Qty.	Material
①	Cam Driver	1	GG25
②	Cam Slider	1	GG25
③	Cam Holder	1	GGG50
④	Slider Plate A	1	Bronze + G
⑤	Guide Bar	1	CK45
⑥	Positive Return	2	CK45
⑦	Slide Guide A	1	Bronze + G
⑧	Slide Guide B	1	CK45
⑨	Cam Slider Plate	1	CK45
⑩	Slider Plate B	2	Bronze + G
⑪	Spring Guide Pin	(1)	CK45
⑫	Stopper Plate	1	CK22

No.		Qty.	Material
⑬	Locking plate	1	CK45
⑭	Key A	3	CK45
⑮	Key B	1	CK45
⑯	Dowel Pin	2	Ø8 x 25
⑰	Elastic Ring	3	L=16
⑱	Coil Spring	1	TJL32-152

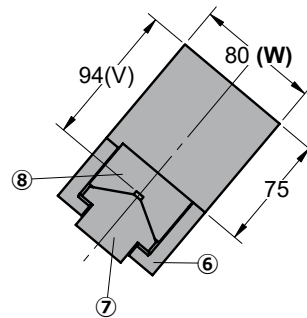
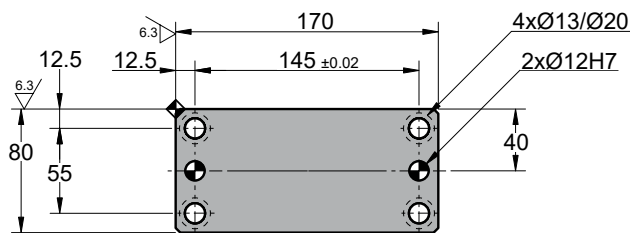
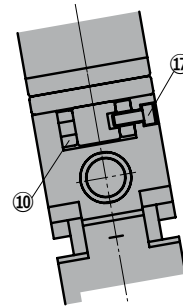
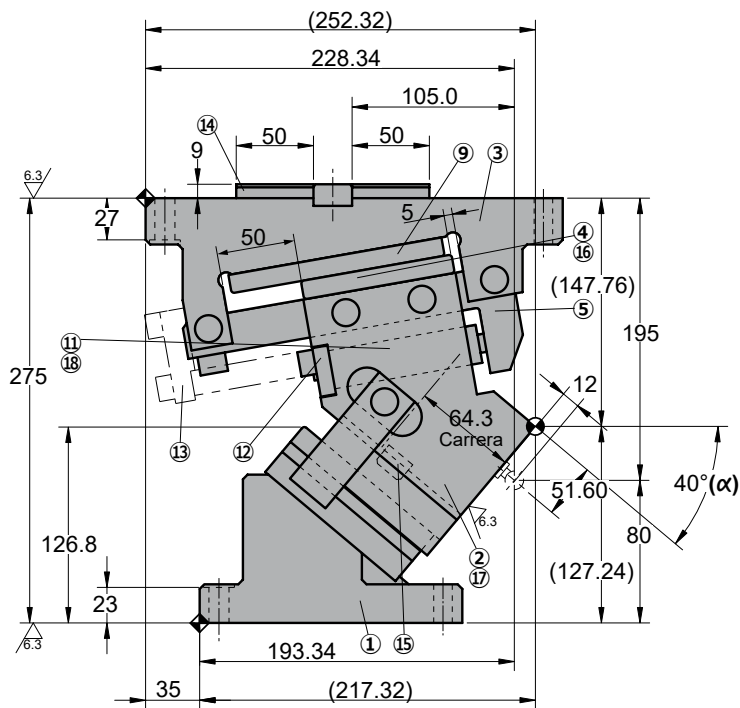
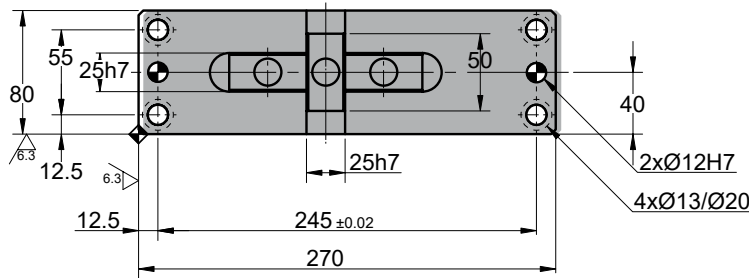
⑲	Gas Spring	1	AG 150 050
---	------------	---	------------

ANRP 0080

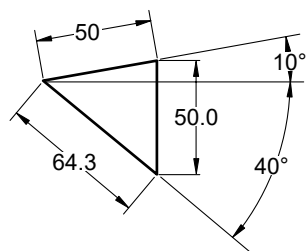
Aerial cam for pierce and flange



ANRP 0080 40



Cam diagram:



Disassembling space:



ANRP 0080

Aerial cam for pierce and flange

Stroke (mm)	Working force kN - (tons)	Spring Force N - (kgf)		Weight (Kg)	Model	W (mm)	α (mm)
		Initial F ₀	Final F ₁				
64.3	166.7 (17.0)	73.5 (7.5)	1223.6 (124.8)	24.7	ANRP	0080	40
		---	1960.6 (200.0)				



Order: Model (W) (α)
ANRP 0080 40

Standard order example according to catalog sheet. Add options applying options table contents.

OPTIONS

	<p>G GAS SPRING</p> <p> G Gas spring included in the cam</p>

Order Options: Model (W) (α)-Option



ANRP 0080 40-G



SPARE PARTS:

- ④ Slider Plate A
- ⑦ Slide Guide A
- ⑩ Slider Plate B
- ⑱ Coil Spring
- ⑲ Gas spring (G)

COMPONENTS

No.		Qty.	Material
①	Cam Driver	1	GG25
②	Cam Slider	1	GG25
③	Cam Holder	1	GGG50
④	Slider Plate A	1	Bronze + G
⑤	Guide Bar	1	CK45
⑥	Positive Return	2	CK45
⑦	Slide Guide A	1	Bronze + G
⑧	Slide Guide B	1	CK45
⑨	Cam Slider Plate	1	CK45
⑩	Slider Plate B	2	Bronze + G
⑪	Spring Guide Pin	(1)	CK45
⑫	Stopper Plate	1	CK22

No.		Qty.	Material
⑬	Locking plate	1	CK45
⑭	Key A	3	CK45
⑮	Key B	1	CK45
⑯	Dowel Pin	2	Ø8 x 25
⑰	Elastic Ring	3	L=16
⑱	Coil Spring	1	TJL32-152

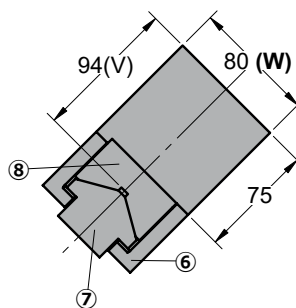
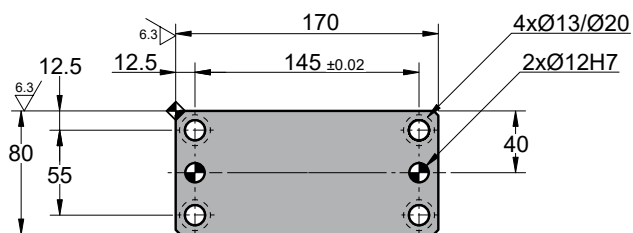
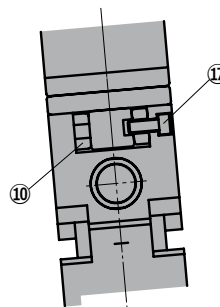
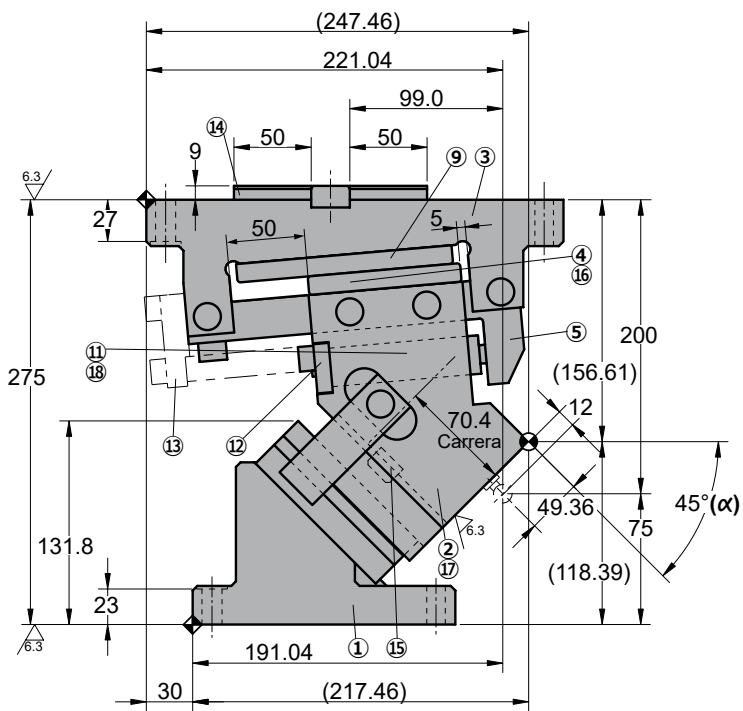
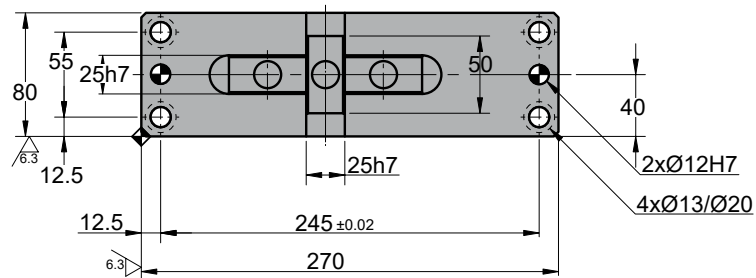
⑲	Gas Spring	1	AG 150 050
---	------------	---	------------

ANRP 0080

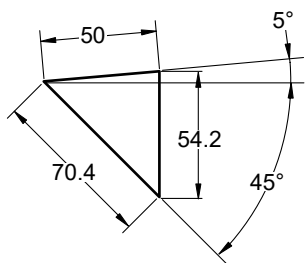
Aerial cam for pierce and flange



ANRP 0080 45



Cam diagram:



Disassembling space:



ANRP 0080

Aerial cam for pierce and flange

Stroke (mm)	Working force kN - (tons)	Spring Force N - (kgf)		Weight (Kg)	Model	W (mm)	α (mm)
		Initial F ₀	Final F ₁				
70.4	166.7 (17.0)	73.5 (7.5)	1223.6 (124.8)	24.7	ANRP	0080	45
		---	1960.6 (200.0)				



Order: Model (W) (α)
ANRP 0080 45

Standard order example according to catalog sheet. Add options applying options table contents.

OPTIONS

	<p>G GAS SPRING</p> <p> G Gas spring included in the cam</p>

Order Options: Model (W) (α)-Option



ANRP 0080 45-G



SPARE PARTS:

- ④ Slider Plate A
- ⑦ Slide Guide A
- ⑩ Slider Plate B
- ⑱ Coil Spring
- ⑲ Gas spring (G)

COMPONENTS

No.		Qty.	Material
①	Cam Driver	1	GG25
②	Cam Slider	1	GG25
③	Cam Holder	1	GGG50
④	Slider Plate A	1	Bronze + G
⑤	Guide Bar	1	CK45
⑥	Positive Return	2	CK45
⑦	Slide Guide A	1	Bronze + G
⑧	Slide Guide B	1	CK45
⑨	Cam Slider Plate	1	CK45
⑩	Slider Plate B	2	Bronze + G
⑪	Spring Guide Pin	(1)	CK45
⑫	Stopper Plate	1	CK22

No.		Qty.	Material
⑬	Locking plate	1	CK45
⑭	Key A	3	CK45
⑮	Key B	1	CK45
⑯	Dowel Pin	2	Ø8 x 25
⑰	Elastic Ring	3	L=16
⑱	Coil Spring	1	TJL32-152

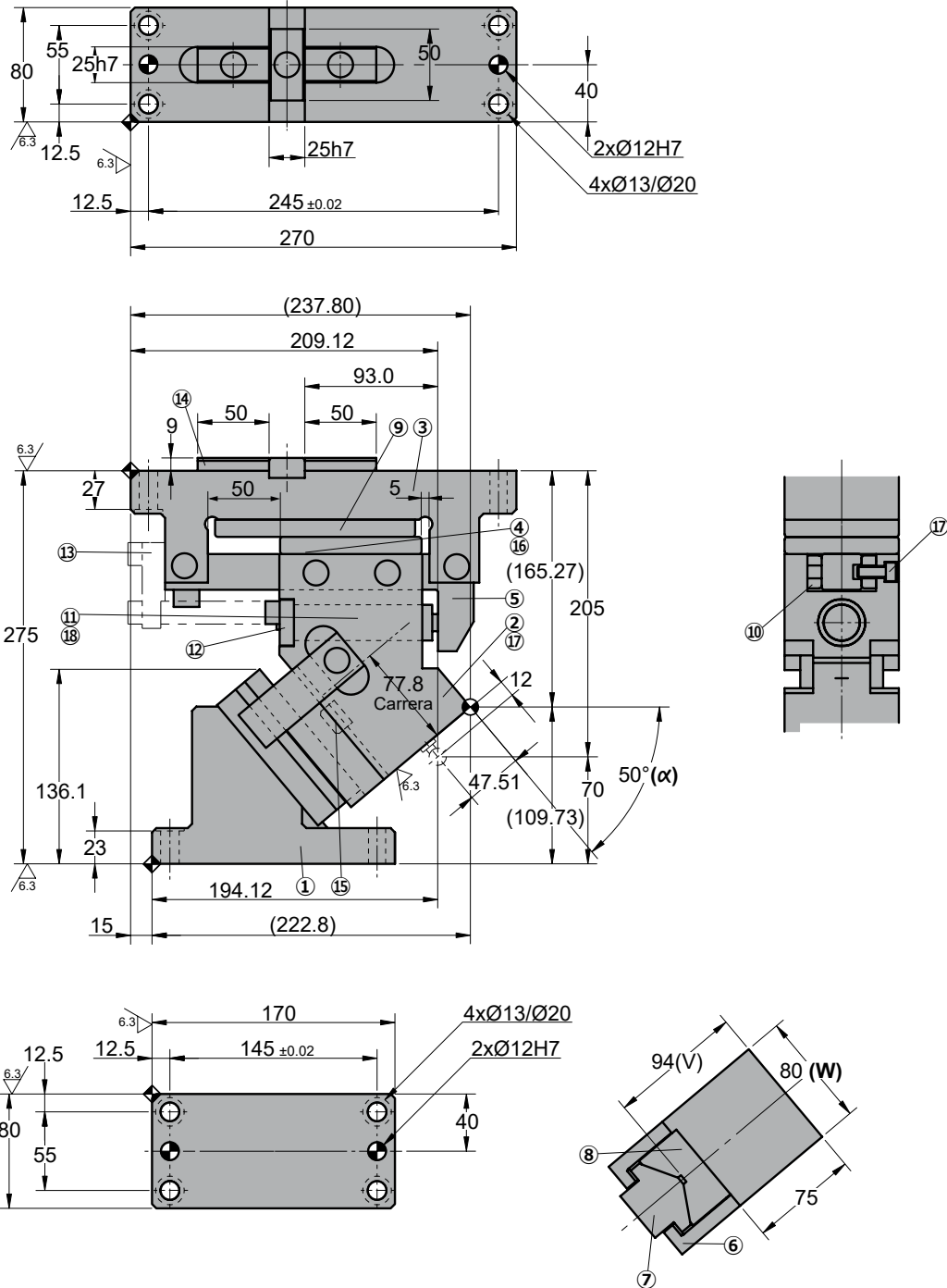
⑲	Gas Spring	1	AG 150 050
---	------------	---	------------

ANRP 0080

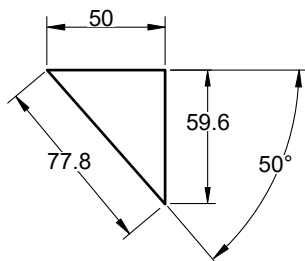
Aerial cam for pierce and flange



ANRP 0080 50



◦Cam diagram:



◦Disassembling space:



ANRP 0080

Aerial cam for pierce and flange

Stroke (mm)	Working force kN - (tons)	Spring Force N - (kgf)		Weight (Kg)	Model	W (mm)	α (mm)
		Initial F ₀	Final F ₁				
77.8	166.7 (17.0)	73.5 (7.5)	1223.6 (124.8)	24.9	ANRP	0080	50
		---	1960.6 (200.0)				



Order: Model (W) (α)
ANRP 0080 50

Standard order example according to catalog sheet. Add options applying options table contents.

OPTIONS

	<p>G GAS SPRING</p> <p> G Gas spring included in the cam</p>

Order Options: Model (W) (α)-Option



ANRP 0080 50-G



SPARE PARTS:

- ④ Slider Plate A
- ⑦ Slide Guide A
- ⑩ Slider Plate B
- ⑱ Coil Spring
- ⑱ Gas spring (**G**)

COMPONENTS

No.		Qty.	Material
①	Cam Driver	1	GG25
②	Cam Slider	1	GG25
③	Cam Holder	1	GGG50
④	Slider Plate A	1	Bronze + G
⑤	Guide Bar	1	CK45
⑥	Positive Return	2	CK45
⑦	Slide Guide A	1	Bronze + G
⑧	Slide Guide B	1	CK45
⑨	Cam Slider Plate	1	CK45
⑩	Slider Plate B	2	Bronze + G
⑪	Spring Guide Pin	(1)	CK45
⑫	Stopper Plate	1	CK22

No.		Qty.	Material
⑬	Locking plate	1	CK45
⑭	Key A	3	CK45
⑮	Key B	1	CK45
⑯	Dowel Pin	2	Ø8 x 25
⑰	Elastic Ring	3	L=16
⑱	Coil Spring	1	TJL32-152

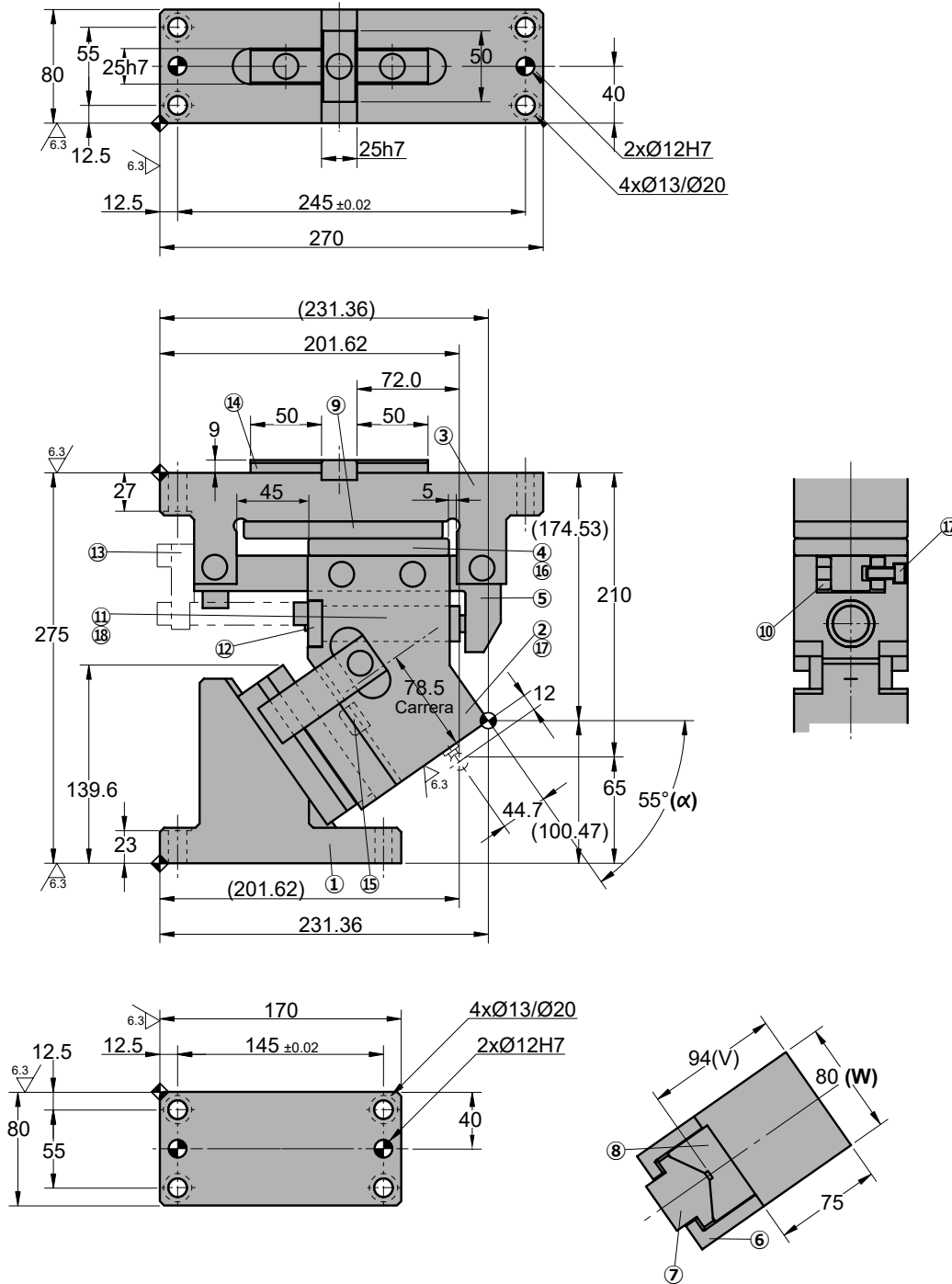
⑱	Gas Spring	1	AG 150 050
---	------------	---	------------

ANRP 0080

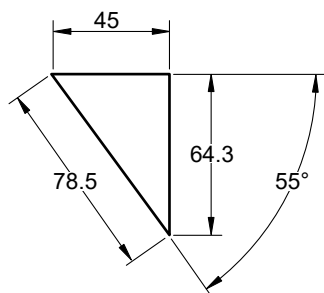
Aerial cam for pierce and flange



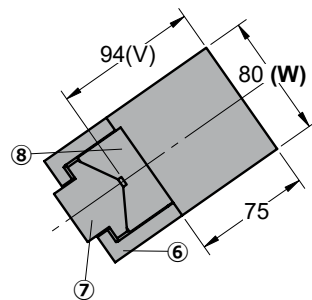
ANRP 0080 55



◦Cam diagram:



◦Disassembling space:





ANRP 0080

Aerial cam for pierce and flange

Stroke (mm)	Working force kN - (tons)	Spring Force N - (kgf)		Weight (Kg)	Model	W (mm)	α (mm)
		Initial F ₀	Final F ₁				
78.5	166.7 (17.0)	73.5 (7.5)	1108.6 (113.0)	25.8	ANRP	0080	55
		---	1902.1 (193.9)				



Order: Model (W) (α)
ANRP 0080 55

Standard order example according to catalog sheet.
 Add options applying options table contents.

OPTIONS

	<p>G GAS SPRING</p> <p> G Gas spring included in the cam</p>

Order Options: Model (W) (α)-Option



ANRP 0080 55-G



SPARE PARTS:

- ④ Slider Plate A
- ⑦ Slide Guide A
- ⑩ Slider Plate B
- ⑱ Coil Spring
- ⑲ Gas spring (G)

COMPONENTS

No.		Qty.	Material
①	Cam Driver	1	GG25
②	Cam Slider	1	GG25
③	Cam Holder	1	GGG50
④	Slider Plate A	1	Bronze + G
⑤	Guide Bar	1	CK45
⑥	Positive Return	2	CK45
⑦	Slide Guide A	1	Bronze + G
⑧	Slide Guide B	1	CK45
⑨	Cam Slider Plate	1	CK45
⑩	Slider Plate B	2	Bronze + G
⑪	Spring Guide Pin	(1)	CK45
⑫	Stopper Plate	1	CK22

No.		Qty.	Material
⑬	Locking plate	1	CK45
⑭	Key A	3	CK45
⑮	Key B	1	CK45
⑯	Dowel Pin	2	Ø8 x 25
⑰	Elastic Ring	3	L=16
⑱	Coil Spring	1	TJL32-152

⑲	Gas Spring	1	AG 150 050
---	------------	---	------------



ANRP 0080

Aerial cam for pierce and flange

Stroke (mm)	Working force kN - (tons)	Spring Force N - (kgf)		Weight (Kg)	Model	W (mm)	α (mm)
		Initial F ₀	Final F ₁				
80.0	166.7 (17.0)	73.5 (7.5)	993.6 (101.3)	26.2	ANRP	0080	60
		---	1847.1 (188.3)				



Order: Model (W) (α)
ANRP 0080 60

Standard order example according to catalog sheet. Add options applying options table contents.

OPTIONS

	<p>G GAS SPRING</p> <p> G Gas spring included in the cam</p>

Order Options: Model (W) (α)-Option

ANRP 0080 60-G



SPARE PARTS:

- ④ Slider Plate A
- ⑦ Slide Guide A
- ⑩ Slider Plate B
- ⑱ Coil Spring
- ⑲ Gas spring (G)

COMPONENTS

No.		Qty.	Material
①	Cam Driver	1	GG25
②	Cam Slider	1	GG25
③	Cam Holder	1	GGG50
④	Slider Plate A	1	Bronze + G
⑤	Guide Bar	1	CK45
⑥	Positive Return	2	CK45
⑦	Slide Guide A	1	Bronze + G
⑧	Slide Guide B	1	CK45
⑨	Cam Slider Plate	1	CK45
⑩	Slider Plate B	2	Bronze + G
⑪	Spring Guide Pin	(1)	CK45
⑫	Stopper Plate	1	CK22

No.		Qty.	Material
⑬	Locking plate	1	CK45
⑭	Key A	3	CK45
⑮	Key B	1	CK45
⑯	Dowel Pin	2	Ø8 x 25
⑰	Elastic Ring	3	L=16
⑱	Coil Spring	1	TJL32-152

⑲	Gas Spring	1	AG 150 050
---	------------	---	------------

ANRP 0080



Aerial cam for pierce and flange